



MODIFICATION BULLETIN

AIRPL
MODEL
91B

91.1/11

PAGE 1 OF 1

Engine cowling. Introduction of reinforcement and locating pins.

URGENCY: III

EFFECT ON WEIGHT DISTRIBUTION:

TIME OF DELIVERY
FOR NECESSARY PARTS:

1 month after receipt of order.

WEIGHT CHANGE
LBS.

STATION
IN.

MOMENT CHANGE
LBSIN.

-

-

-

MARKING: -

Drawings: Not essential

1076454 Upper panel. Engine cowling.

1076630 Lower panel. Engine cowling.

Parts required per plane

Item Ref.figure

01.	1 Sheet	1.5x70x100 AL 3526-38
02	1 Sheet	1.5x50x70 AL 3526-38
03	2 Protecting button	AS 215905
04	2 Locating pin	1077146
05	2 Sheet	1077149 ur
	8 Rivet	AS 211504-2,5x7 AL 3114-3
	8 Rivet	AS 211502-3,2x9 AL 3114-3

Aircraft concerned:

91201 - 91252

Spare parts not involved

Since cracks has appeared in the upper panels of the engine cowling a reinforcement sheet and a protecting button should be introduced in the upper forward section of the left hand and right hand panel.

At the same time the forward locating pin should be removed and the locating pin 1077146 should be introduced in the screwhole behind the forward lock, in which case a sheet is added and a hole is drilled in the lower panel.

Work procedure.

Remove the engine cowling.

Make and fit the reinforcement sheets item 01 and 02 according figure 1. Notice that the right hand sheet is smaller than the left hand one. Rivet the reinforcement sheets. Drill holes for and introduce the protecting buttons.

Drill out the two forward locating pins.

Remove the screw in the bakelite block behind the forward lock. Fit the locating pin item 04 and rivet sheet item 05 according figure 2. Mount the engine cowling and mark the position of the locating pin. Remove the upper panels and drill ϕ 8 in the lower panel for the locating pin.

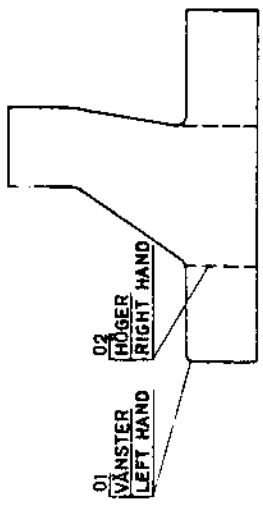
Mount the upper panels.

August 20 1953

SAAB SERVICE DEPT:

SAAB DESIGN DEPT:

ROYAL SWEDISH AERONAUTICS BOARD:



UNGEFÄRLIG UTBREDNING
APPROXIMATE SHAPE OF THE SHEET

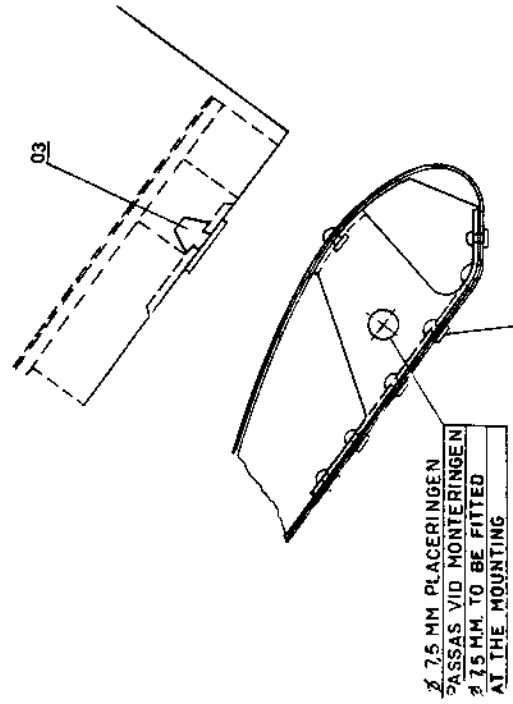


FIG 1

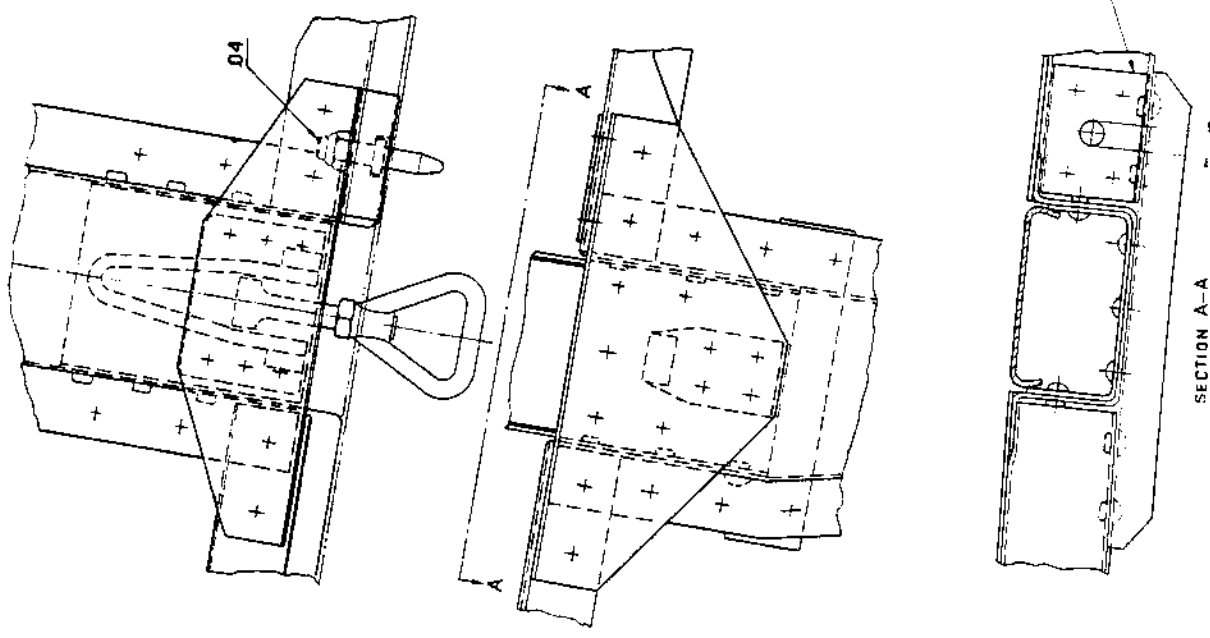


FIG 2