

SERVICE BULLETIN

Date: Sept 1982 No 91.1.004 Issue 2
(Supersedes No 91.1.004)

Aircraft: SAAB SAFIR 91B, 91B2, 91C and 91D

Subject: Inspection of elevator spar.

Reason: Damage to elevator spar at bearing assy attachment.

Time of compliance: Initial inspection before next flight (if not previously performed in compliance with Service Bulletin No 91.1.004.) Thereafter inspection at every second 100 flight hours.

Work procedure: Inspect the attachment of the bearing assy LH and RH elevator for cracks and deformations. Special attention shall be given to the area where the attachment bolts (item 19) are located. See enclosed figure on page 2. Cracks and deformations most probably will start at the flange of the rear side of the spar opposite the anchor nuts for the bolts (item 19). For inspection cut a hole with a diameter of approximately 25 mm in the fabric just behind the flange of the spar and right behind the bolts (item 19).

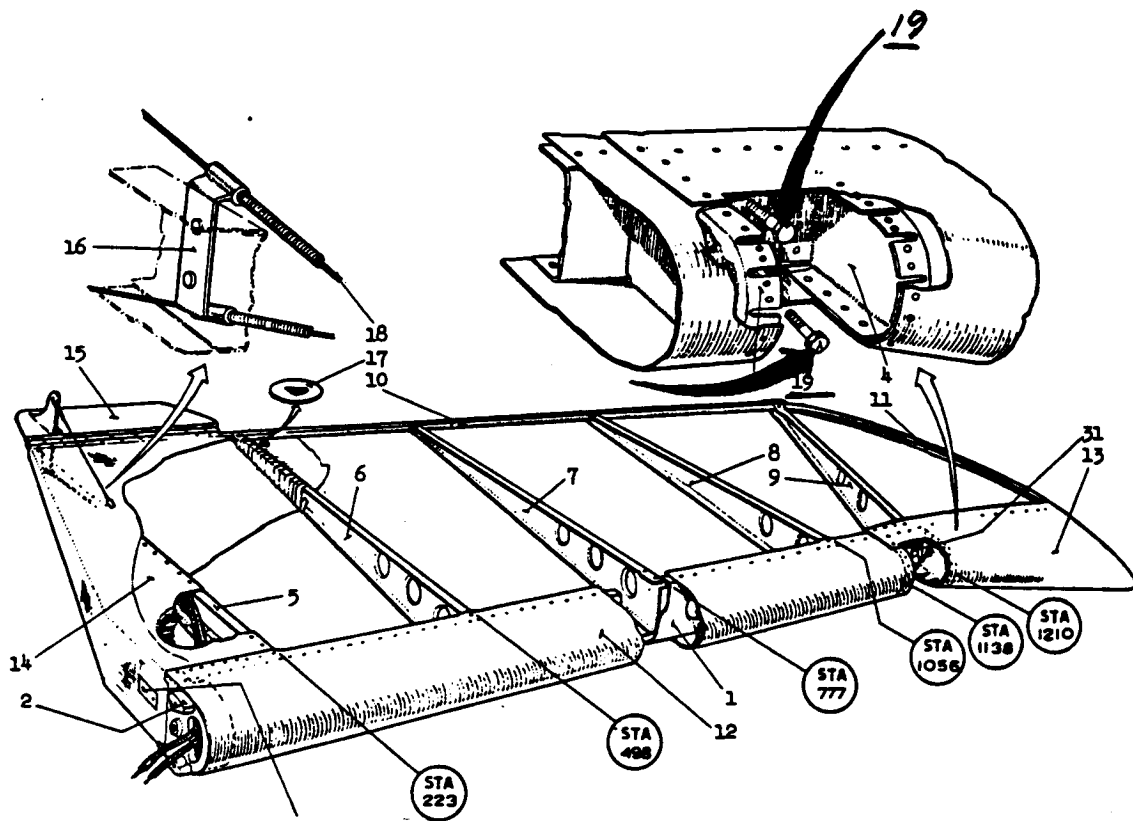
Use lamp and mirror to inspect the flange and the area where the anchor nuts are located.

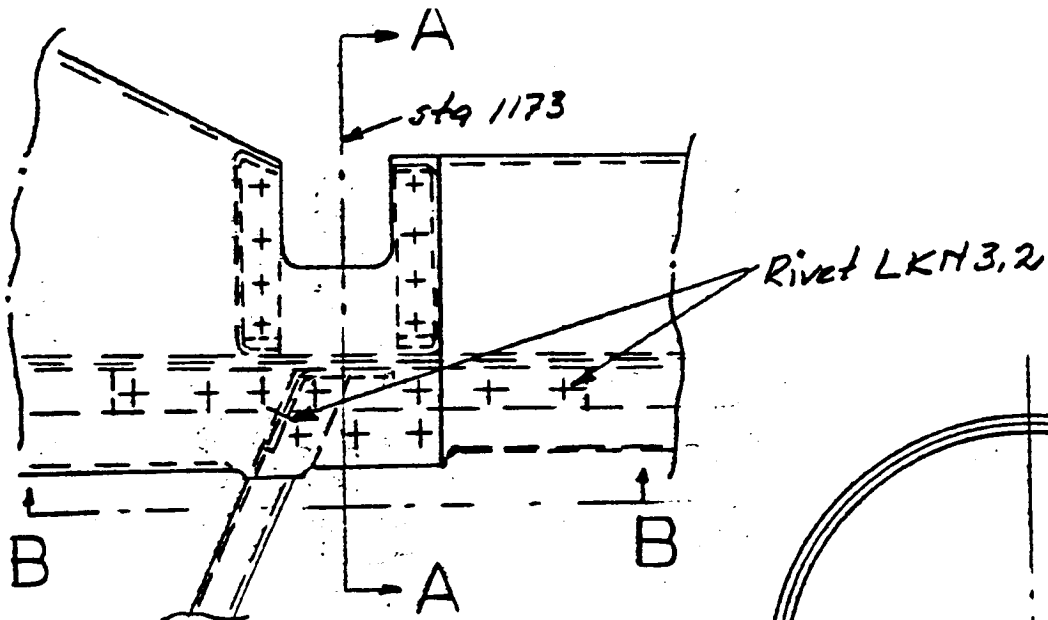
If cracks or deformations are found, the elevator must be replaced or repaired.

If no damage is found the fabric should be repaired by patching the hole.

In case of repair, see enclosed scetch on page 3.

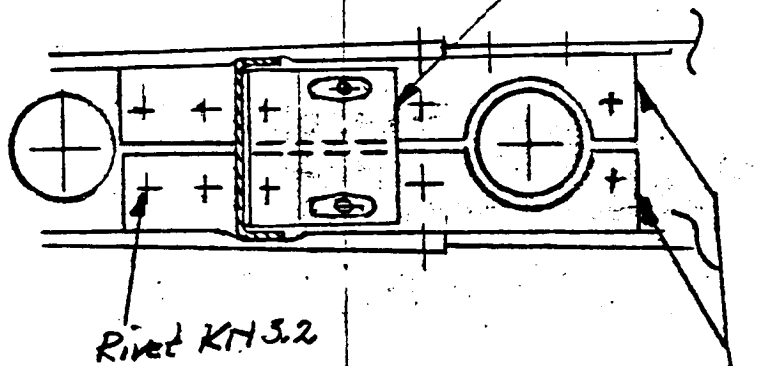
The above inspection to be discontinued if repair has been carried out as prescribed in this Bulletin.





Scale 1:2.5

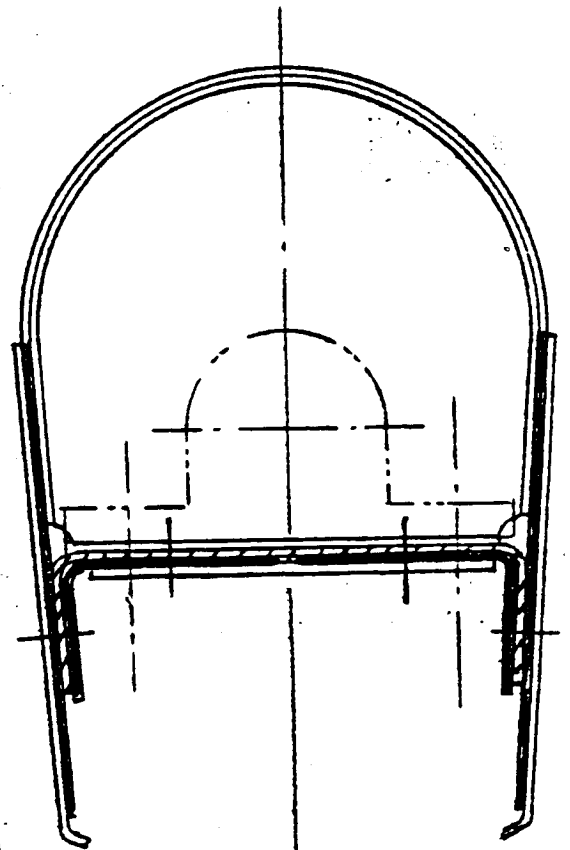
ALUMIN 3526-38; t=0.6



Scale 1:2.5

SAAB ALUMIN 3526-38; t=0.8

ALCMA : AL-P13PI-T4



Scale 1:1

REPAIR OF SPAR, ELEVATOR.