



# Modification Bulletin

Aircraft Type  
91 Safir

Reference <b>Airplane 91B, 91B-2 and 91C. Main Gear and Nose Gear.</b>	Date <b>June 10, 1958</b>	No <b>91.2/10 B</b>	
	Saab Service Dept. <b>C Larsson</b>		
Introducing of Oil Nipples for Torque Links and Carrier.	Saab Design. Dept. <b>J Boklund</b>	Page <b>1 of 4</b>	
	Royal Swedish Board of Civil Aviation <b>S Fogelström</b>		
Urgency <b>IV</b>			
Marking  -	Effect on weight distribution		
	Weight change Lbs	Station In.	Moment change Lbsin.
	-	-	-

Time of delivery for necessary parts

**4 months after order.**

**K/K**

### Information:

In order to obtain a more efficient lubrication for the nose gear torque links the existing bolts can be replaced by new ones with lubrication grooves and nipples. At the same time oil nipples can be fitted on carrier SA 590245 and on the torque link attachments on main gear.

Drawings: Not essential

Parts required per plane:

Item	Fig 1		
01	2	Bolt	1129835
02	2	Washer	533183
03	2	Castle Nut	AS 215401-M8
04	2	Cotter Pin	AS 211401-2x18 Steel
05	3	Washer	1077635ur Steel
06	3	Oil Nipple	AS 254501-1
07	1	Washer	1129845
	1	Screw	AS 212119-M4x4

Aircraft concerned:

91B, 91B-2 and 91C.

Spare parts involved:

- a. Leg, Nose Gear SA 1076123
  - b. Carrier SA 590245
  - c. Leg, LH Main Gear SA 1075929
  - d. Leg, RH Main Gear SA 1075931
  - e. Piston SA 594570
  - f. Cylinder SA 594568
  - g. Cylinder SA 594572
- To be changed

### Fig 2

01	4	Washer	1129843
02	4	Washer	1137623
03	4	Oil Nipples	AS 254501-1
	4	Screw	AS 212119-M4x4

Applies up to airplane 91.320

Applies from airplane 91.321

Parts required per spare part:

- a.
  - 2 Bolt 1129835
  - 2 Washer 533183
  - 2 Castle Nut AS 215401-M8



2	Cotter Pin	AS 211401-2x18	Steel
3	Washer	1077635ur	Steel
2	Oil Nipples	AS 254501-1	
1	Screw	AS 212119-M4x4	

b.

1	Washer	1129845	
1	Oil Nipple	AS 254501-1	

c and d.

2	Washer	1129843 alt. 1137623 (cf. dimension a fig 2 section B-B)	
2	Oil Nipple	AS 254501-1	
2	Screw	AS 212119-M4x4	

e, f and g.

1	Washer	1129843 alt. 1137623 (cf. dimension a fig 2 section B-B)	
1	Oil Nipple	AS 254501-1	
1	Screw	AS 212119-M4x4	

The following parts are obsolete:

Bolt 1076969

Work procedure

Nose gear

Loosen the chain for the retracting control from the carrier and dismount the latter carefully as to prevent the needle bearing from falling into pieces. Ref. Airplane Manual Saab Safir.

Solder washer item 07 to the carrier with silver solder according to figure 1. Drill a hole  $\phi$  6.6 mm in the carrier and use washer item 07 for guiding. Remove burrs from the hole and tap M8 in washer item 07 and carrier. Fit oil nipple item 06.

Re-fit carrier and chain.

Remove existing bolts from the torque link attachments.

Tap existing lubrication hole in the torque link lugs M4 and plug with screw AS 212119-M4x4. Fit the new bolts item 01 and nipples item 06 in direction according to figure 1. Fit washer item 05 so an axial play of 0.3 mm is obtained.

LH and RH main gear

Remove the bolts from the torque link attachments. Drill a hole  $\phi$  6.6 mm in upper and lower torque link lugs and tap M8 according to figure 2, section B-B.

Tap existing holes M4 and plug with screw AS 212119-M4x4.

Fit washer item 01 (dimension a=20 mm) alt. item 02 (dimension a=22 mm) with oil nipple item 03 according to figure 2, section B-B.

Mount the torque links. Adjust as above.

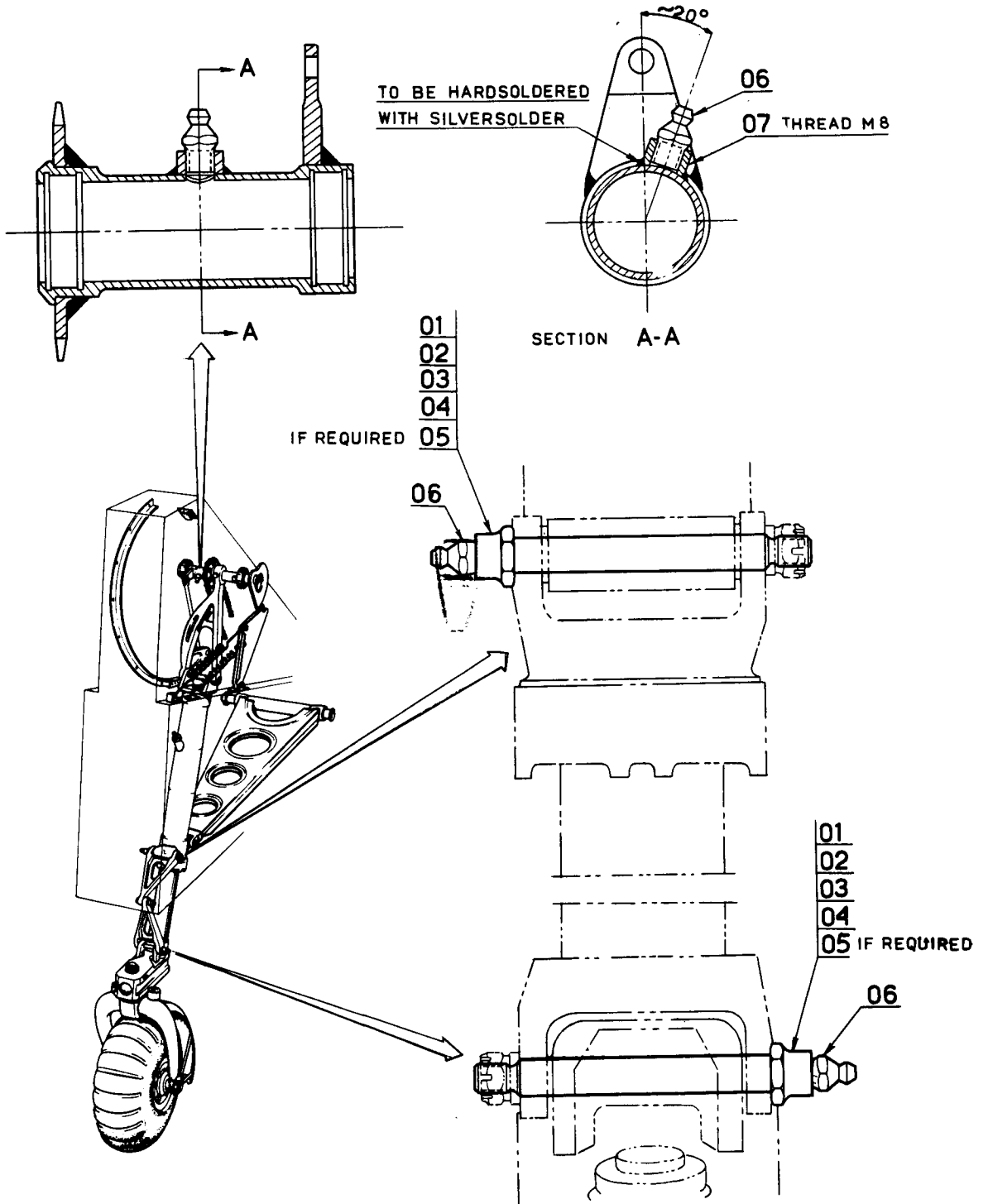


FIG.1

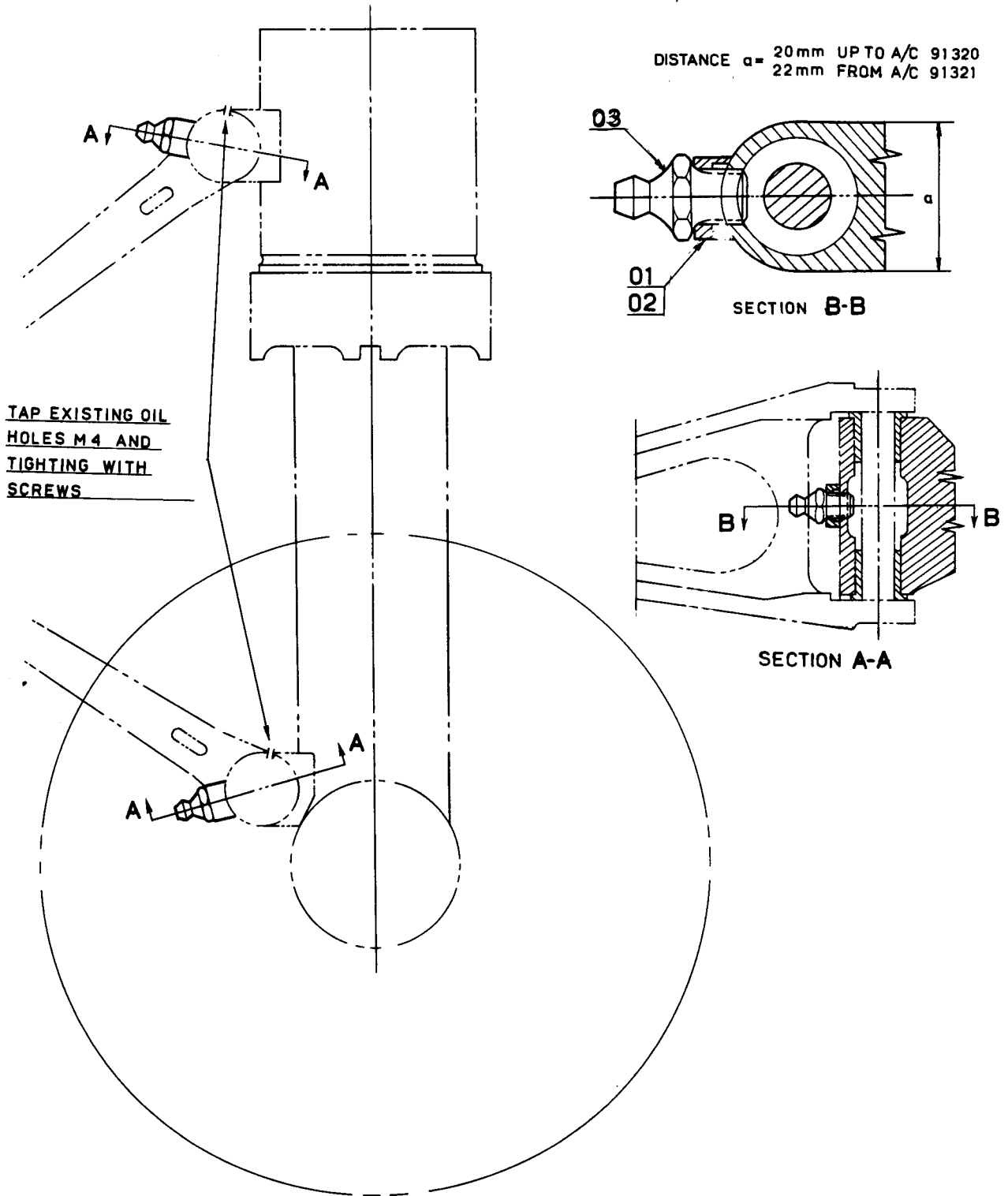


FIG. 2