



Modification Bulletin

Page

Reference <u>Airplane 91B, 91B2, 91C and 91D.</u> <u>Main Gear</u> Introducing of sealing at the wheel shaft.	Date August 16, 1960 Saab Service Dept. C. Larsson Saab Design. Dept. J. Boklund	No. 91.2/11						
Urgency III	Royal Swedish Board of Civil Aviation Lfs S. Fogelström							
Marking -	Effect on weight distribution <table border="1"> <thead> <tr> <th>Weight change Lbs.</th> <th>Station In.</th> <th>Moment change Lbsin.</th> </tr> </thead> <tbody> <tr> <td>-</td> <td>-</td> <td>-</td> </tr> </tbody> </table>		Weight change Lbs.	Station In.	Moment change Lbsin.	-	-	-
Weight change Lbs.	Station In.	Moment change Lbsin.						
-	-	-						

Time of delivery for necessary parts

3 months after order

K/K

Drawings: Not essentialParts required per airplane:
and spare part a:

Item	Ref. figure	
01	2	O-ring AS 215206-28 Rubber 7228-7
02	2	Sealing washer 1156755 ur 2 x ϕ 36,0 Rubber 7226-6

Airplanes concerned:

91B, 91B2, 91C and 91D including manufacturing No. 410 equipped with Good-Year brakes.

Spare parts concerned:

Leg. main gear LH SA 594796

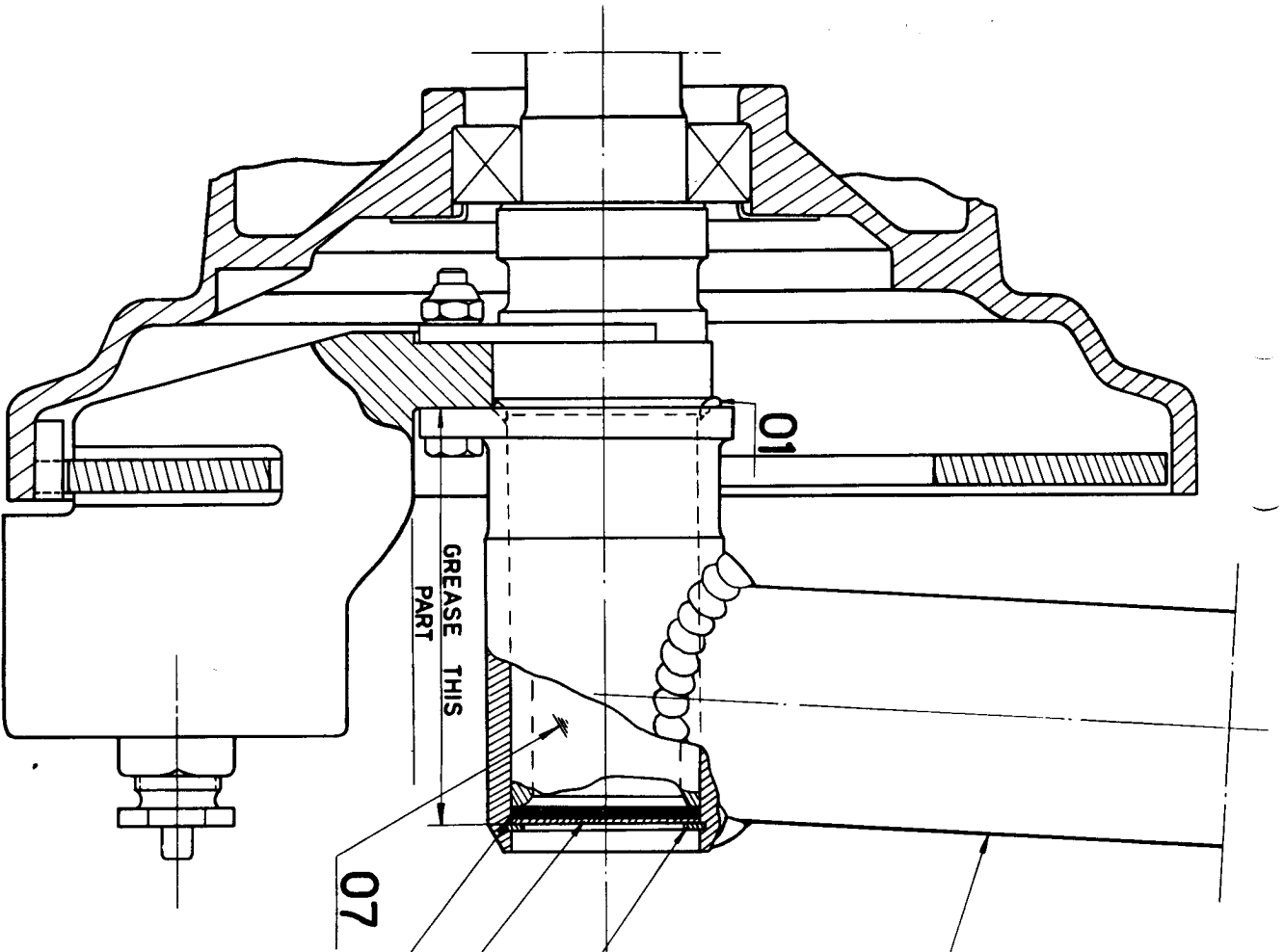
a Leg. main gear RH SA 594797

Deleted parts per plane:Purpose:

To prevent water to enter and cause corrosion between shaft item 07 and piston item 05 resp. 06 an O-ring and a sealing washer shall be embodied. At the same time the contact surface of the shaft against the piston shall be greased.

Work procedure:

Remove wheel and shaft from piston item 05 LH resp. 06 RH main gear. Remove possible corrosion on shaft and piston by polishing. Grease shaft and piston with grease acc. to the figure. Fit the sealing washer item 02, washer item 03 and circlip item 04. Fit O-ring item 01 on the shaft and fit the shaft. Fit the wheel.



02 MUST SEAL AGAINST POS 05,06 (DIMENSION Ø 36)
 TO BE GLUED TO POS 03: GLUE 9375-2 (FLINTKOTE
 No 974) OR SIMILAR

03

04

05
06

07

GREASE THIS
 PART