



Reference  <u>Airplane 91C and 91D Safir. Main Landing Gear</u>  Changed locking between wheel and shaft.	Date August 6 1962	No 91.2/13
	Saab Service Dept. B Carlsson <i>Blm</i>	
	Saab Design. Dept. S Lundgren <i>Xu</i>	
Urgency IV	Royal Swedish Board of Civil Aviation S Fogelström <i>Stm</i>	
Marking —	Effect on weight distribution	
	Weight change Lbs	Station In.
	-	-

Time of delivery for necessary parts  
4 months after order  
  
C/C

Information

In order to obtain a more reliable locking between wheel and shaft a hole for a split pin should be drilled in the shaft and existing nut and lock washer be replaced by a castle nut and a split pin.

Drawings: Not essential

Parts required per plane:

Item	Incl. in figure	
01	2 Washer	1159423
02	2 Nut	1159421
03	2 Split pin	AS 211401-3x50

Parts required per spare part a and b

1 Washer	1159423
1 Nut	1159421
1 Split pin	AS 211401-3x50

Airplanes concerned:

91.310, 91.347-91.439 and other airplanes with Good Year brakes

Spare parts involved:

a Leg. LH lgd gear, SA594796 } To  
b Leg. RH lgd gear, SA594797 } be  
c Shaft 1137619 } changed

The following parts are obsolete

2 Nut	AS 215416-M30x1.5
2 Lock washer	AS 215427-30

Work procedures:

Remove existing nut and lock washer as well as the wheel from LH and RH wheel shaft.  
Drill a hole  $\phi$  0.13" in the shaft according to figure 1.  
Fit wheel, washer item 01, nut item 02 and split pin item 03 according to figure 2.  
The nut should be tightened according to Airplane Manual Saab Safir, chapter 2:3:D.

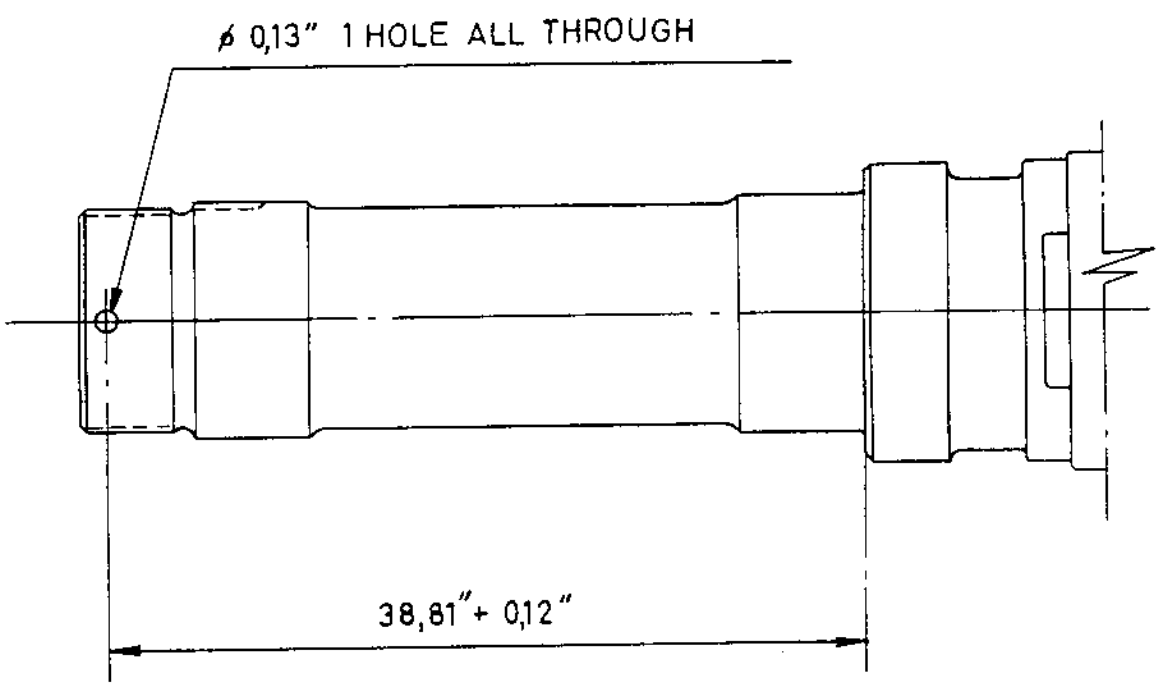


Fig.1

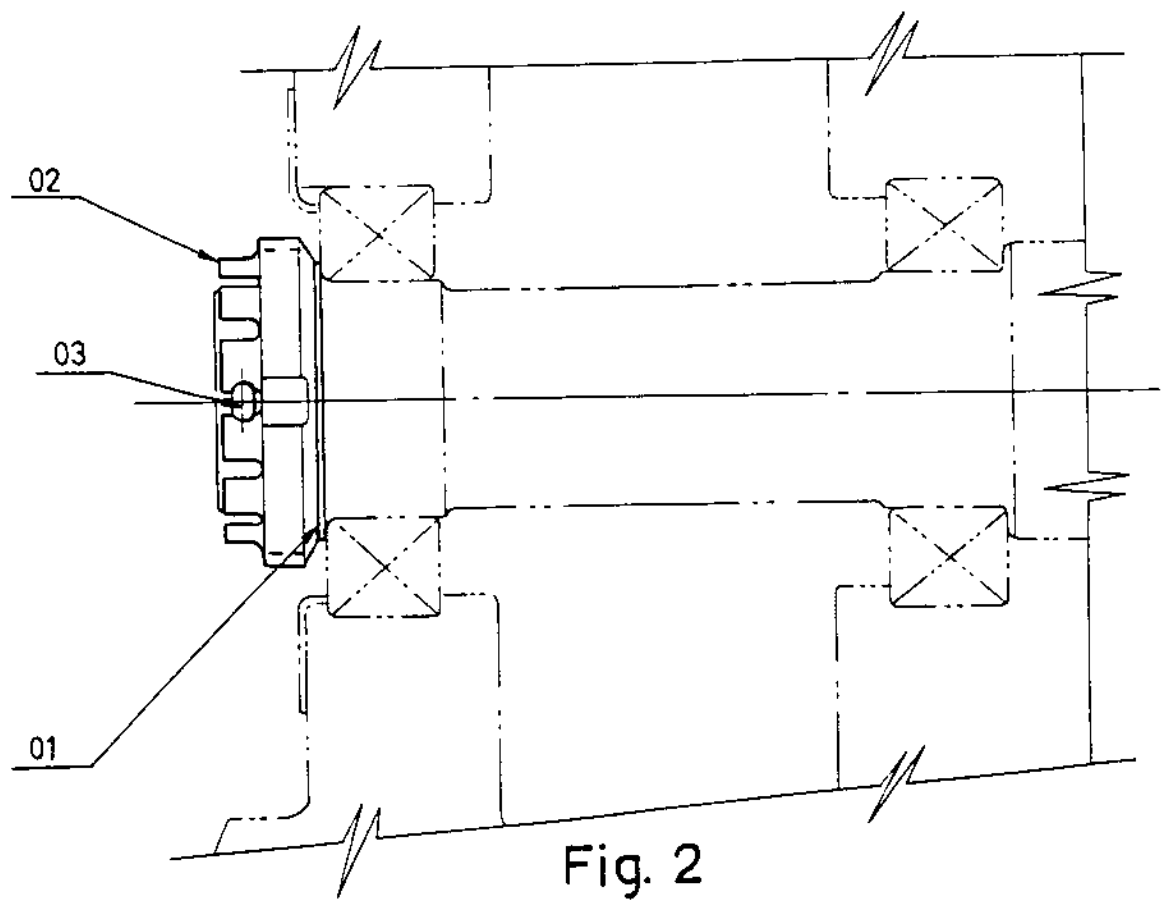


Fig. 2