



Modification
Bulletin

Aircraft Type
91 Safir

Reference <u>Rudder</u> Introduction of reinforcements at ribs	Date Oct. 30, 1958	No 91.3/3
	Soab Service Dept. C Larsson	
	Soab Design. Dept. J Boklund	Page 1 of 2
Urgency IV	Royal Swedish Board of Civil Aviation S Fogelström	

Marking -	Effect on weight distribution		
	Weight change lbs	Station In.	Moment change lbs.in.
	-	-	-

Time of delivery for necessary parts
3 months after order

K/K

Drawings: Not essential
1075021 Rudder
1141919 Repair of rib, rudder

Aircraft concerned:
91A, 91B, 91B-2, 91C

Parts required per plane

Spare parts involved:
-

Item	Fig 2.	
01	6 Plate	1142541ur Al 3526-38 0,8x40x80
02	36 Rivet	AS 211502-3,2x8 Al 3514-3

Damage which can cause abnormal weakness in the rudder has been observed at the rib attachments to the rudder spar.
In case damage is detected stiffenings are to be installed.

Work procedure:

Check that the rudder trailing edge is not bent. Push the rudder close to the stop blocks and check for abnormal weakness in the ribs by pressing gently on the trailing edge at rib Sta 391, Sta 674 and Sta 957, see fig 1. If the fabric covering thereby creases the rib attachments are damaged.
If damage is observed proceed as follows:
Dismount the rudder.
Cut up the fabric covering.
Rivet the reinforcements to the ribs according to fig. 2, after having straightened the nose plate flange at the reinforcements.
Sew up the covering and cement a fabric strip over the seam.

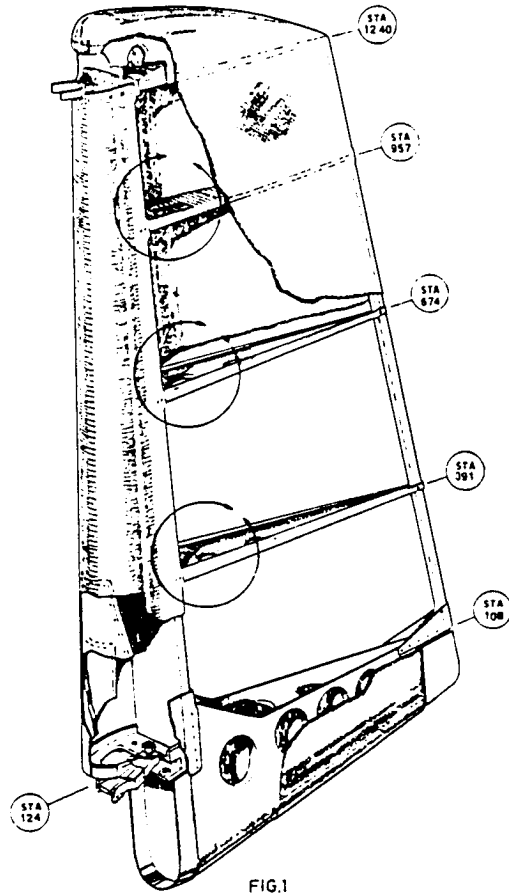
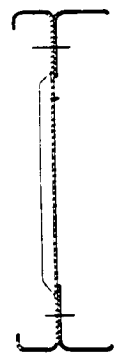


FIG. 1



SECTION B - B

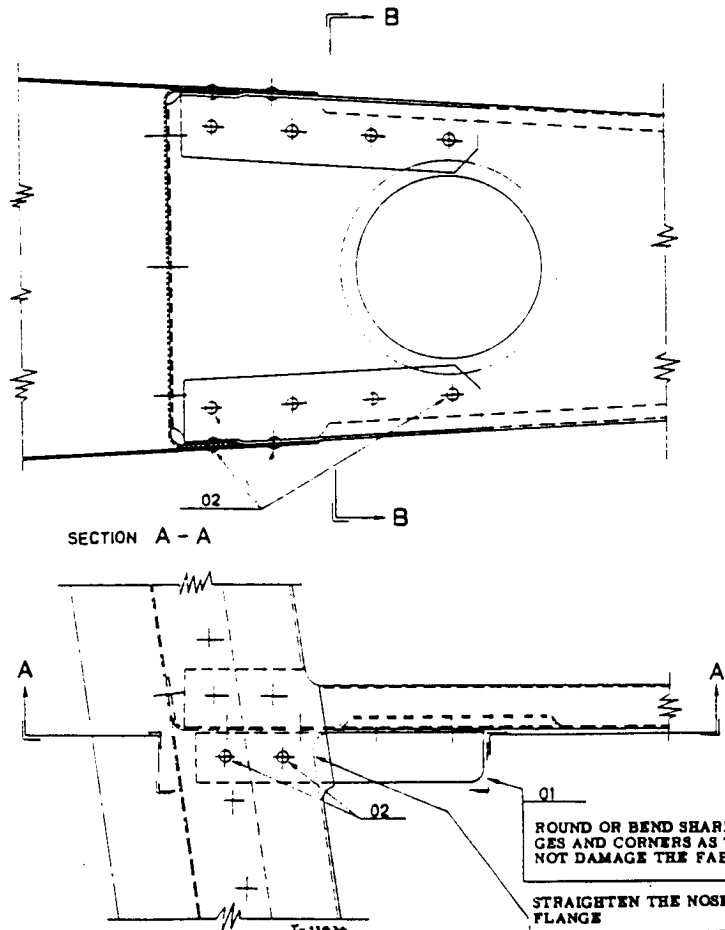


FIG. 2