



MODIFICATION BULLETIN

AIRPL
MODEL

91.4120/1

91

PAGE 1 OF 1

Rudder Pedals. Improved braking effect

URGENCY: III

EFFECT ON WEIGHT DISTRIBUTION:

TIME OF DELIVERY
FOR NECESSARY PARTS: 15th Nov. 1947WEIGHT CHANGE
LBS.STATION
IN.MOMENT CHANGE
LBSIN.

Saab/C

-

-

-

MARKING: None

Drawings: Not essential
505503, sheet 3, Rudder PedalsParts required on each plane:-Item

01	2 Pull rods	540194
02	1 Brake arm, left	SA 590692
03	1 Brake arm, right	SA 590693
04	2 Forked rod terminals	534547

Following parts on each plane are obsolete:-

2 Pull rods	505852	} Scrap
1 Brake arm, left	SA 590499	
1 Brake arm, right	SA 590500	
2 Forked rod terminals	505850	

Aircraft concerned:

91102-91132

(Number of aircraft: 31)

Spare Parts not involved

When braking the main wheels while taxi-ing, it has proved to be difficult to obtain a satisfactory brake effect when the rudder pedals are not in neutral position. The brake arm system on the rudder pedals has been changed in order to obtain equally good brake effect for various positions of the pedals.

Working procedure:-

Remove the pull rods, item 01, according to fig.
 Unfasten the springs from their connections on the pedals.
 Remove split pins and washers for locking of pedals, which then should be removed.
 Unscrew the forked terminals, item 04, from their unions to the brake arms, items 02 and 03.
 Replace the forked terminals by new ones.
 Remove the brake arms
 Mount the new brake arms
 Mount the existing push-pull rods, the pedals and the springs and the new pull rods.

Note:- Check that the dim. 0.236" according to view A-A in the fig. is held to.

2 11 1948

SAAB SERVICE DEPT:

C. Larsson

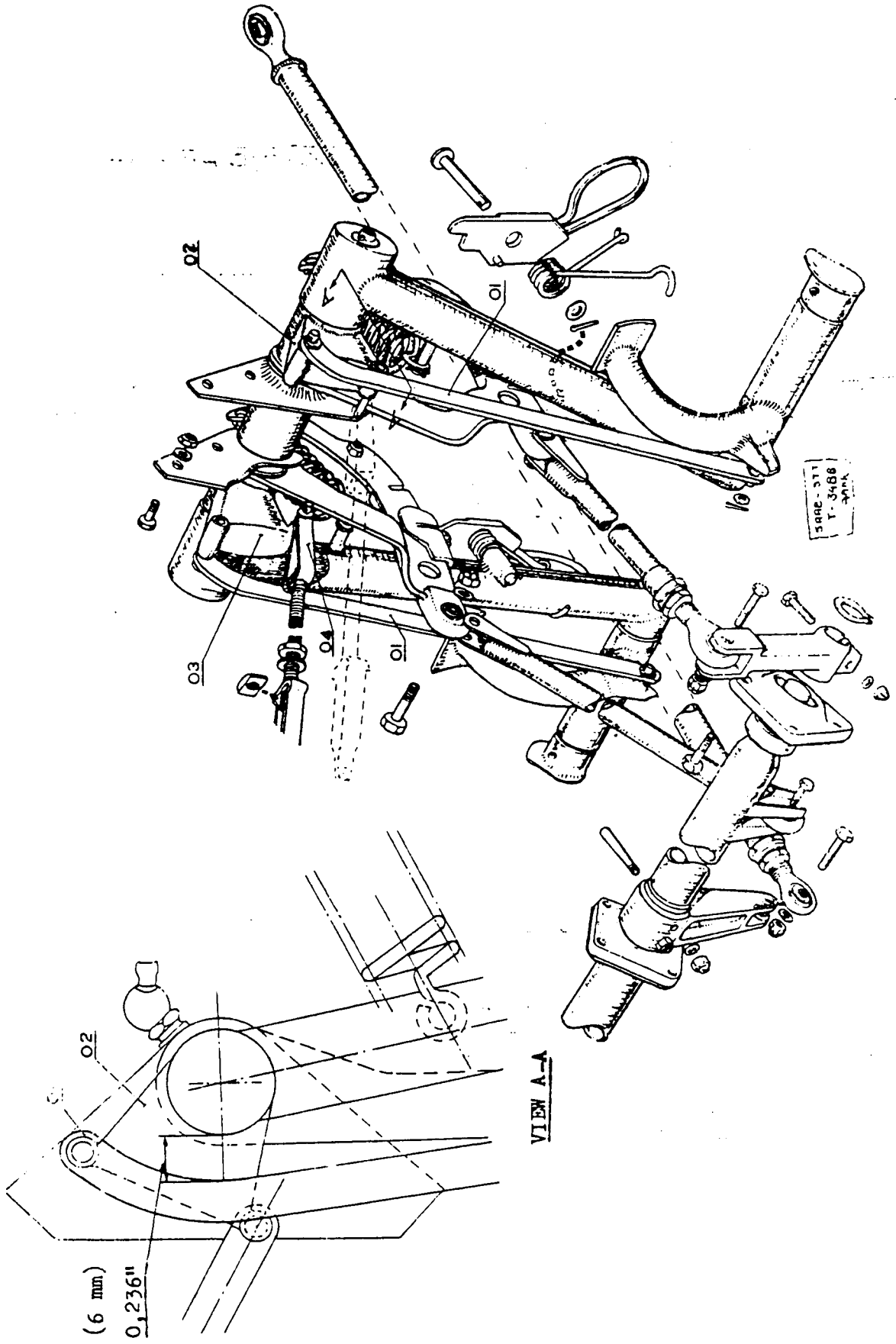
SAAB DESIGN DEPT:

O. Ösping

ROYAL SWEDISH AERONAUTICS BOARD

Stegellhorn

DIMENSION 0.236" APPLIES WHEN PEDALS ARE IN NEUTRAL POSITION



3488-371
1-3488
-400

VIEW A-A