



Modification
bulletin

Airplane model
91B Safir

Reference <u>Landing gear indicator. Changed locat- ion of micro-switch and introducing new curved arm.</u>	Date June 29, 1954	No 91.4/2	
	Saab Service Dept. <i>[Signature]</i>	Page 1 of 2	
	Saab Design. Dept. <i>[Signature]</i>		
Urgency III	Royal Swedish Aeronautics Board <i>[Signature]</i>		
Marking -	Effect on weight distribution		
	Weight change Lbs	Station In.	Moment change Lbsln.
	-	-	-

Time of delivery for necessary parts

10/7 1954

Saab/K

Drawings: Not essential

1076434 Throttle control

1076325 Curved arm, nose gear

Parts required per plane:

Item Drawing 1076434

64	1	Curved arm	1077944- 2
	4	Rivet	AS 211502-3,2x12
			Alumin 3514-3

The following parts are obsolete:

Clamp 1076446-1

Aircraft concerned:

91201-91275

Spare parts involved:

Segment 1076325-1 is to be modified

The landing gear indicator should be modified as to make the red warning lamp lit when the throttle control lever is moved the last rear third of its stroke until the landing gear control lever is turned into locked position. For this reason the curved arm on the nose gear shaft is replaced by a new curved arm on the throttle control transverse shaft and the micro-switch is moved from the transverse shaft to the RH side of the nose gear well.

Work procedure:

Remove the segment 1076325-1 and cut off the curved arm according to figure 1. Re-fit the segment. Remove micro-switch SA 539052 from the clamp on the throttle control transverse shaft. Unfasten the clamp by removing the screws and bending up the clamp. Disconnect the push-rods and remove the parts located outside the RH bearing on the throttle control transverse shaft.

Rivet curved arm item 01 including lever to the hub on the transverse shaft according to figure 2. Re-fit the removed parts on the transverse shaft. Re-install micro-switch on the RH side of the nose wheel well and adjust the location as to make the red lamp lit when the throttle control lever is moved the last rear third of its stroke.

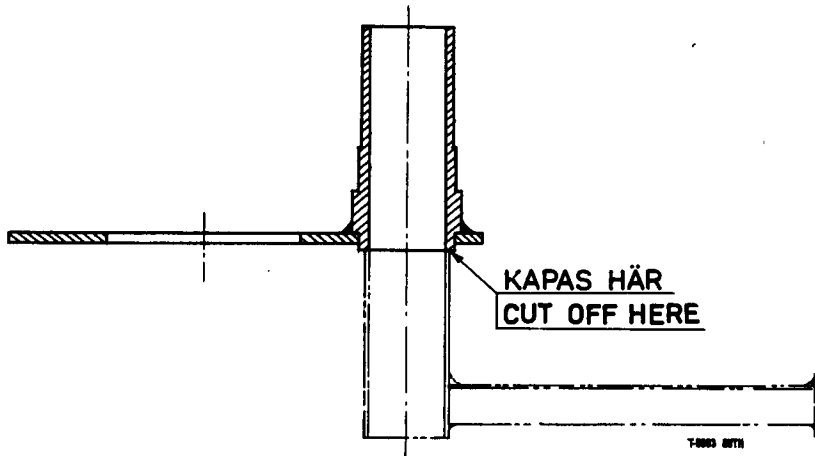


FIG. 1

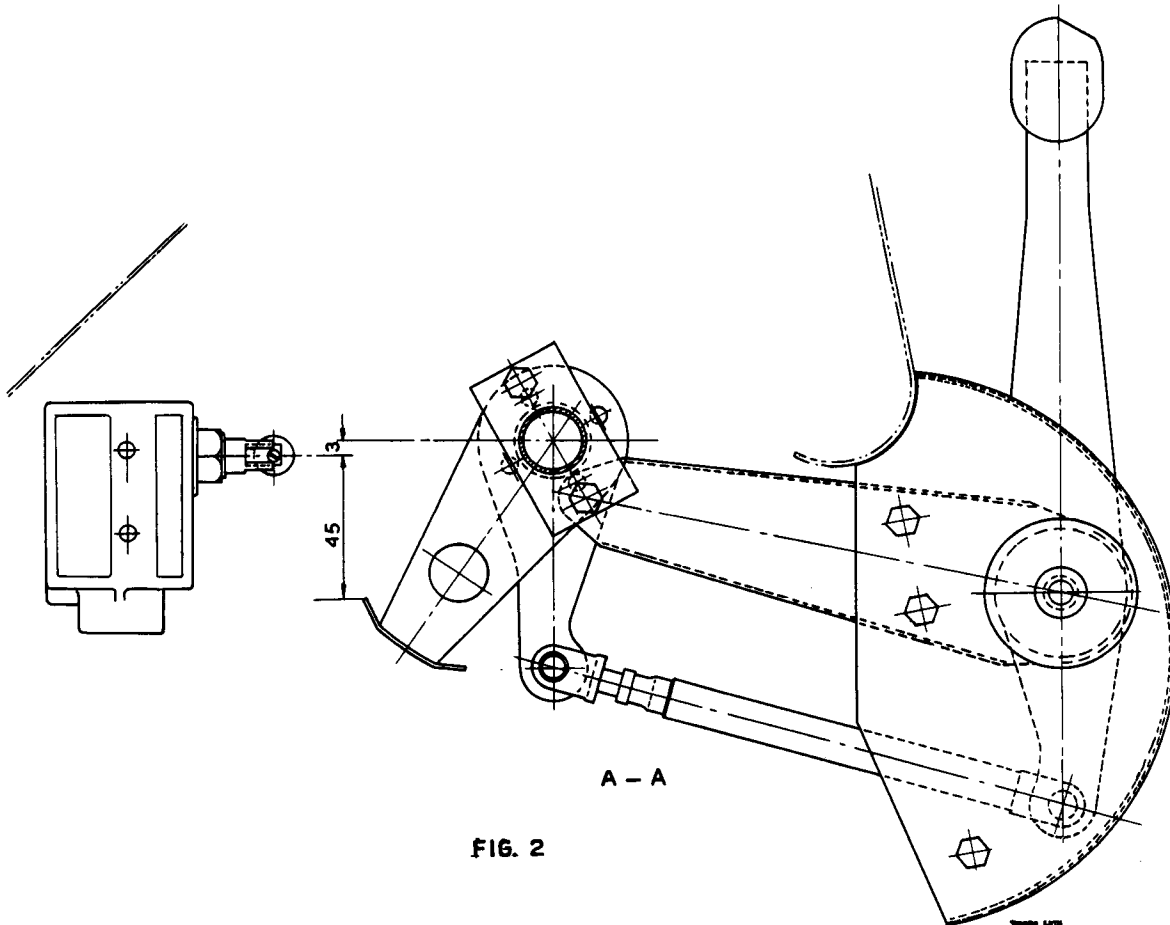
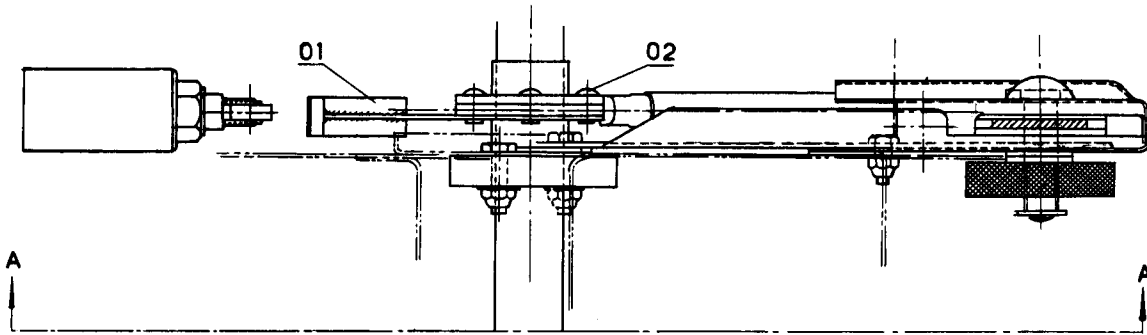


FIG. 2