



The following parts are obsolete:

1	Control cable	1076386-2ur
1	Control cable	1076386-3ur
1	Control cable	1076465-1ur
1	Control cable	1076465-2ur
1	Control cable	1076617-1ur
1	Flanged coupling	1076390
1	Flanged coupling	1076634
2	Adjusting screw	1076618
1	Terminal pipe	1076635
2	Nut	AS 212601-M10x1

At manufacturing of new airplanes, improvements have been made on fuel pump control, carburetor air control, starter clutch control and cabin heating control.

The following modifications should be introduced on existing airplanes 91B and 91C at overhaul or at repair works on the controls, because only the new components will be kept in stock as spare parts.

Fuel pump control (figure 1)

The control cables item 01 and 02 are replaced by new ones. On control cable item 01 the cable is changed from ϕ 1.8 mm to ϕ 1.5 mm and on both cables the cable balls 1076389 are replaced by cable balls AS 218497. In order to fit the larger cable balls, cut out a slot and a larger hole in flanged coupling 1076395, an oval hole for the cable ball and a hole ϕ 1.5 mm for the lock pin item 4 in handle 1076388 and a larger hole for the cable balls and 2 holes ϕ 2.2 mm for the cotter pin item 03 in bell crank 1076281.

Carburetor air control (figure 2)

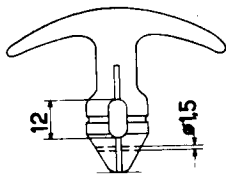
Control cables item 05 and 06 should be replaced by new ones, which are fitted with cable balls AS 218497 instead of cable balls 1076389. Drill up the holes for the cable balls to ϕ 12 mm in pulley 1076467 and slide 1076200.

Starter clutch control (figure 3)

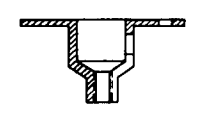
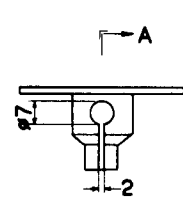
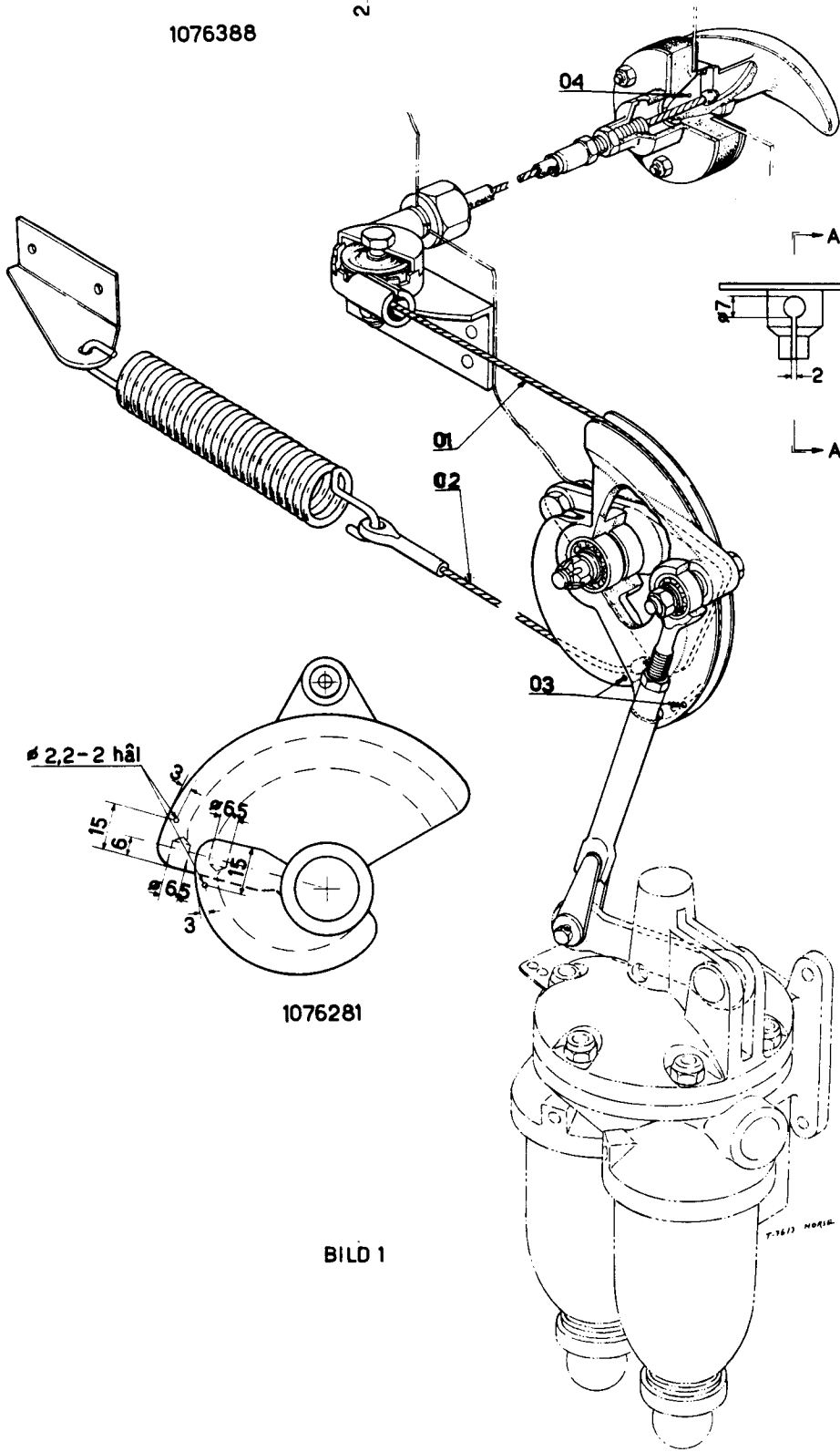
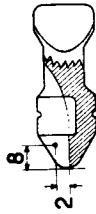
Control cable item 07 should be replaced by a new one, which is fitted with cable balls AS 218497 instead of 1076389. Cut out a slot in bearing bracket 1076624 for inserting of the cable. Flanged coupling 1076390, adjusting screw 1076618, and nut AS 212601-M10x1 are replaced by flanged coupling item 08.

Cabin heating control (figure 4)

Flanged coupling 1076634, adjusting screw 1076618, terminal pipe 1076635, and nut AS 212601-M10x1 are replaced by flanged coupling item 09.

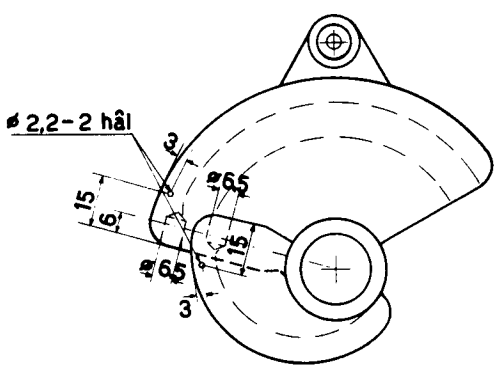


1076388



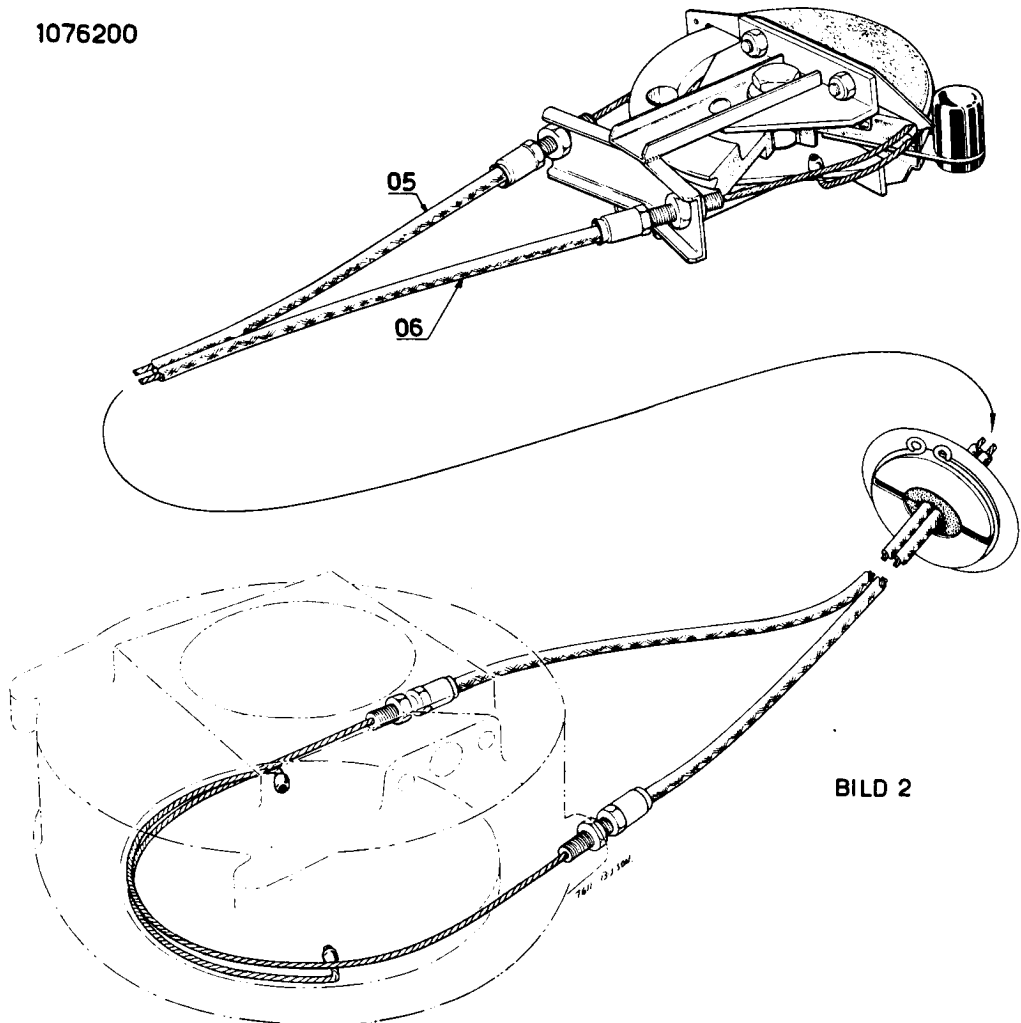
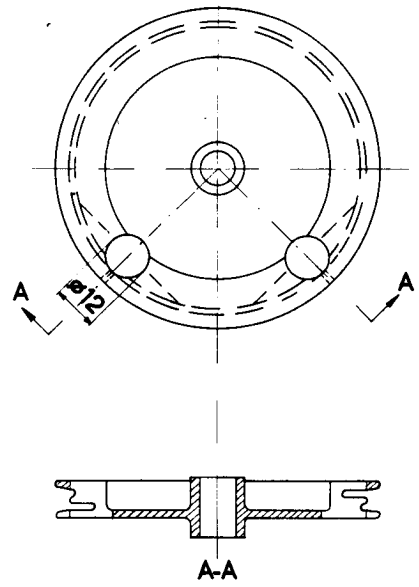
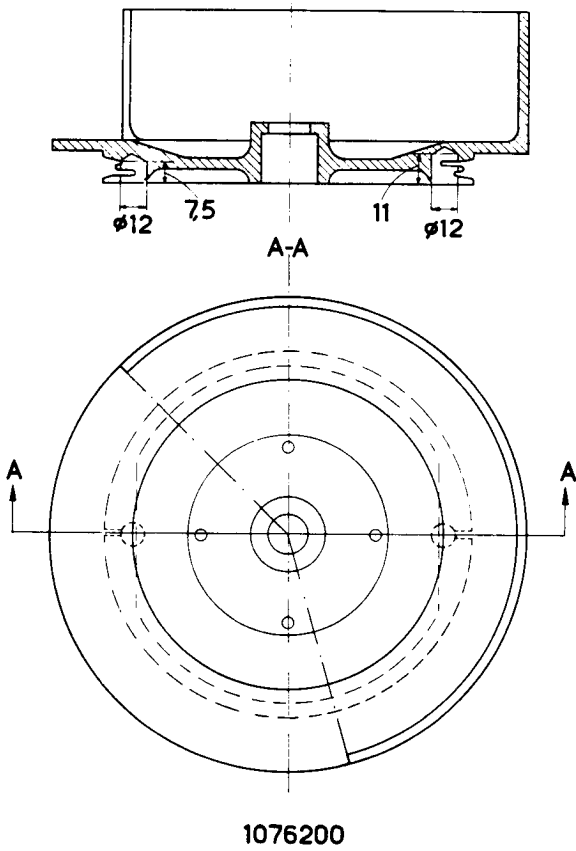
SEKTION A-A

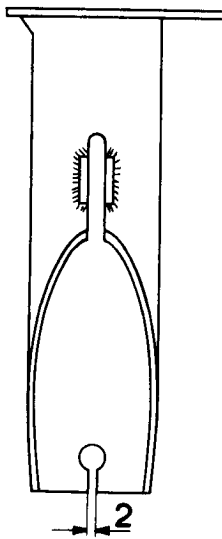
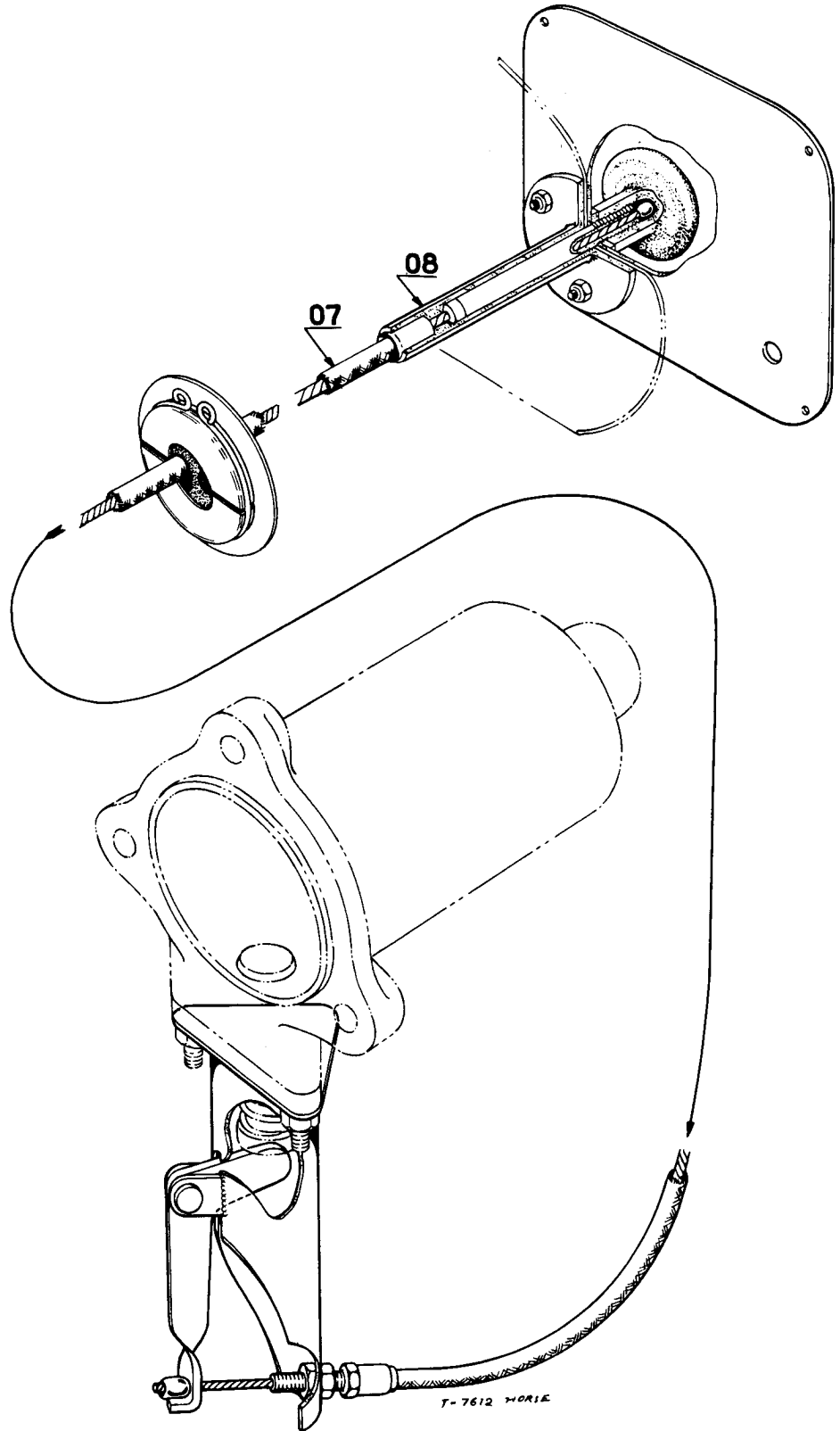
1076395



1076281

BILD 1





1076624

BILD 3

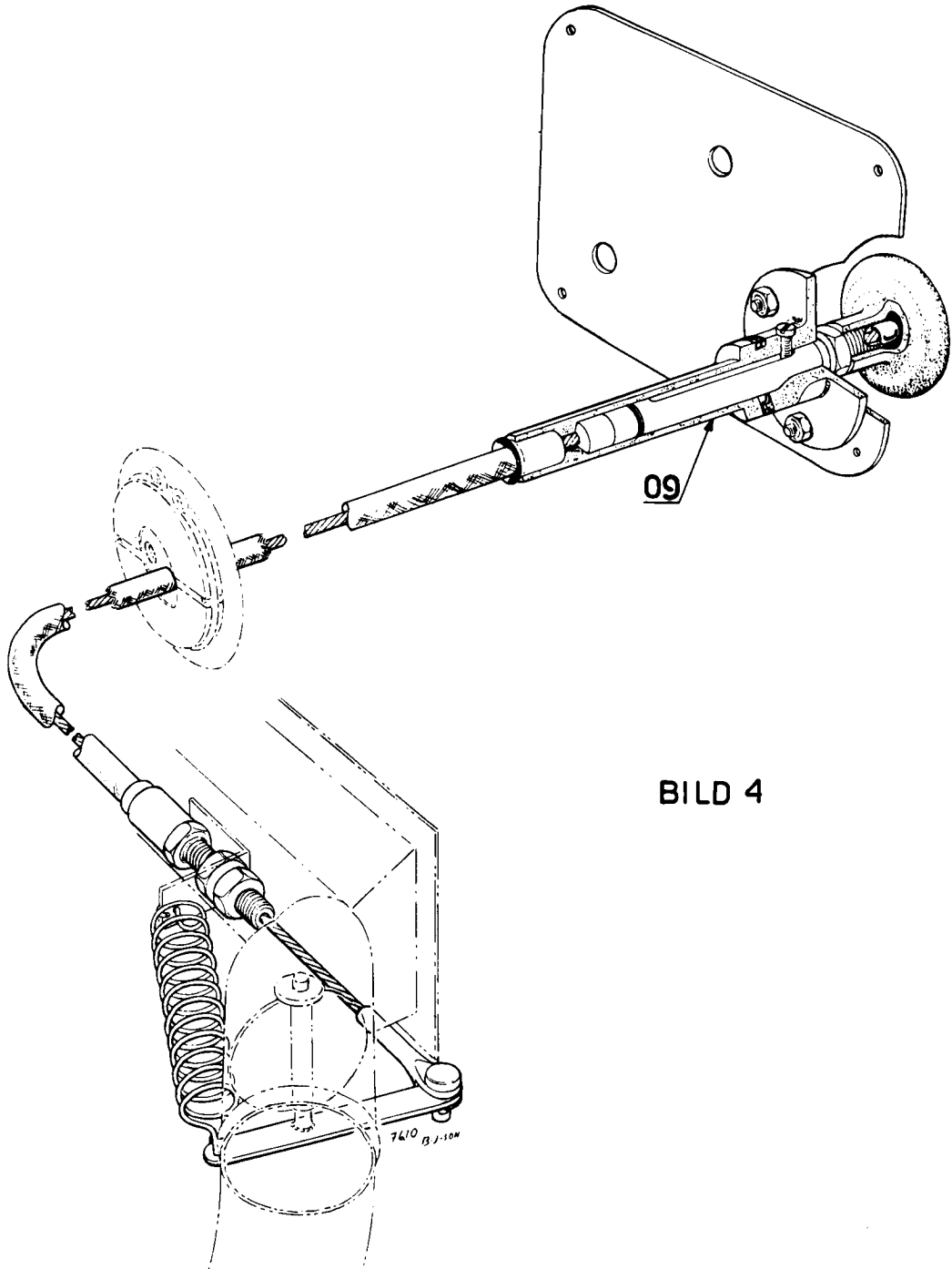


BILD 4