

Work procedure:

Remove generator and generator gear.

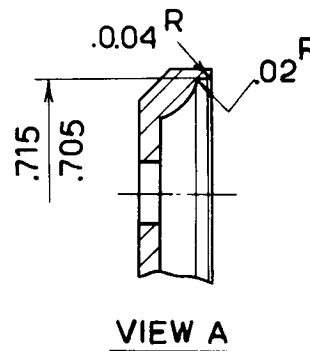
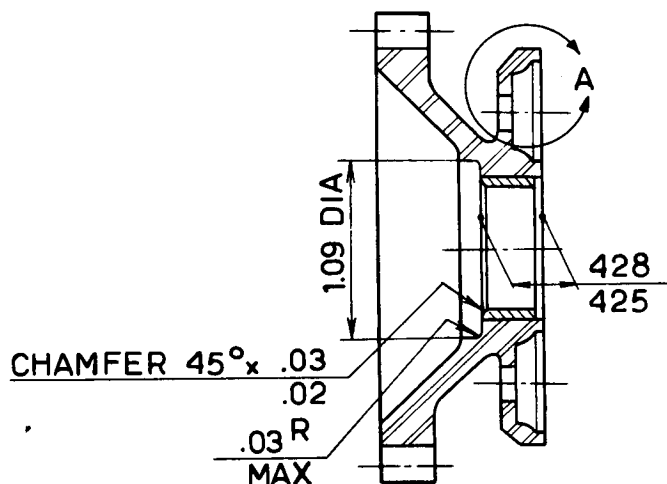
Turn gear 66829 and adapter 66827 according to dimensions in fig. A and B.

The dimensions are given in inches.

Install the generator gear according to fig. C.

Mount the generator.

*Temporarily mill to O.D. shell
to work*



T-10290

Fig. A

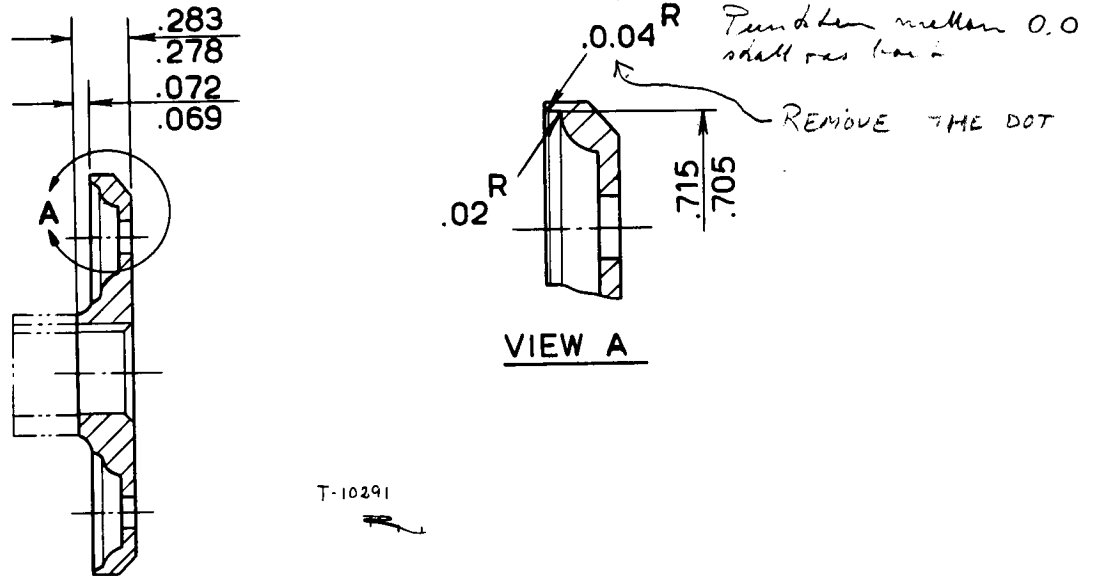


Fig. B

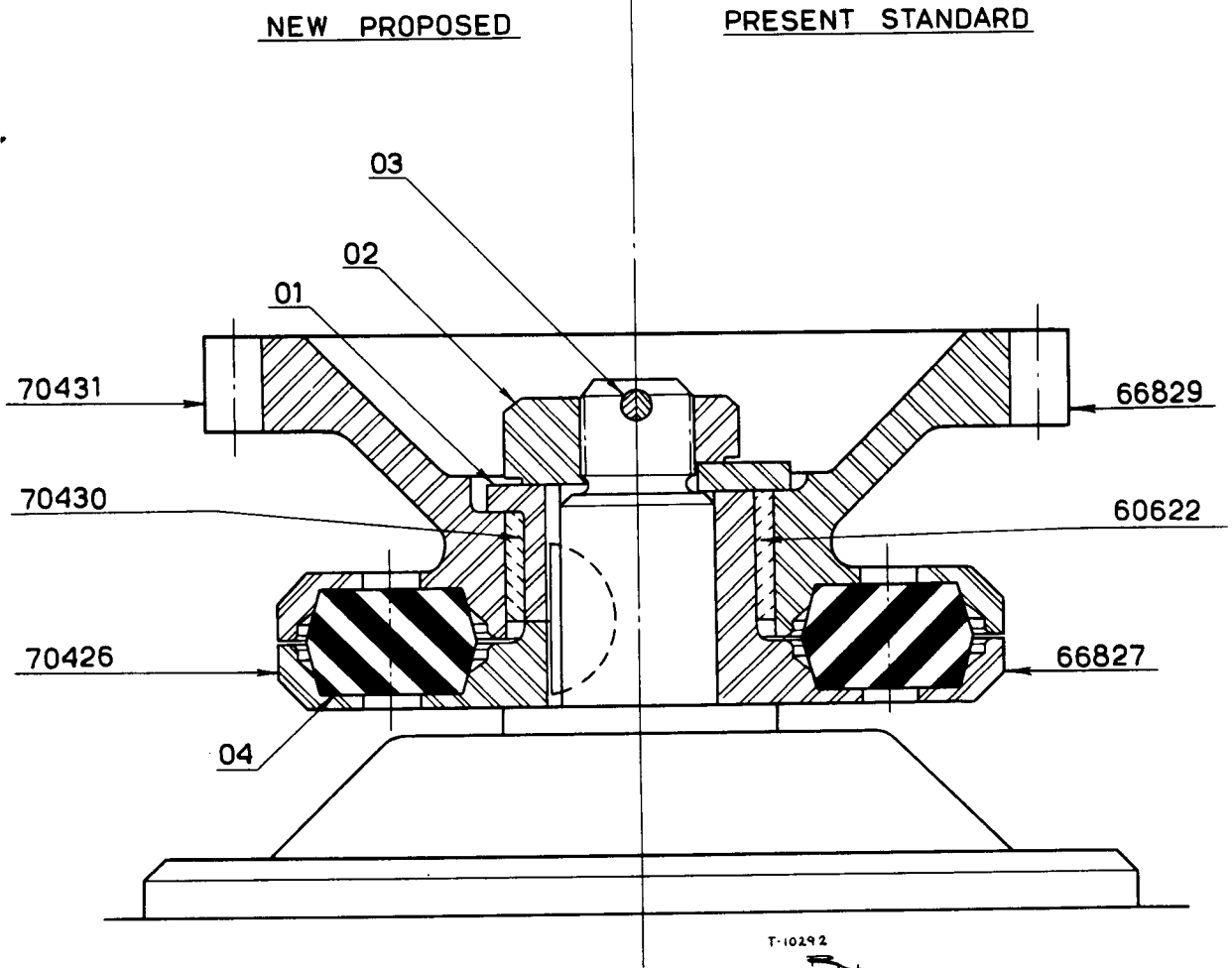


Fig. C