



MODIFICATION BULLETIN

AIRPL
MODEL
91
Safir

91. 6/3

PAGE 1 OF 1

Engine cowling. Introduction of a leather cuff

URGENCY: III

EFFECT ON WEIGHT DISTRIBUTION:

TIME OF DELIVERY
FOR NECESSARY PARTS: 28 February 1948WEIGHT CHANGE
LBS.STATION
IN.MOMENT CHANGE
LBSIN.

Saab/C

-

-

-

MARKING: None

Drawings: Not essential

524323 Oil system

Parts required on each planeItem

- 01 1 Leather cuff SA 592214
- 02 1 Wire spiral SA 530127
- 03 4 Clips 550684 ur
- 04 8 Rivets 2.5x5 mm AS 211501
Aluminium 3514-3

Aircraft concerned

91102-91123, 91125, 91127, 91129

(Number of aircraft: 25)

Spare parts not involved

The oil consumption of the engine in some cases has been abnormally high. Furthermore there has been leakage at the propeller shaft. The cause of this has been that the overpressure in the crankcase has been too great.

By introduction of a leather cuff acting as a sealing between the engine vent line and the bottom plate of the cowling the oil consumption will be reduced and the leakage at the propeller shaft will stop.

Working procedure

Remove the bottom plate

Provide a hole at the drain cap in the bottom plate, see figure.

Rivet the clips (item 03) around the hole.

Fasten the top of the leather cuff to the vent pipe (item 05) using the existing clip (item 06).

Reassemble the bottom plate

Fasten the leather cuff (item 01) to the bottom plate by pressing the wire spiral (item 02) into the clips.

28.FEB. 1948

SAAB SERVICE DEPT.

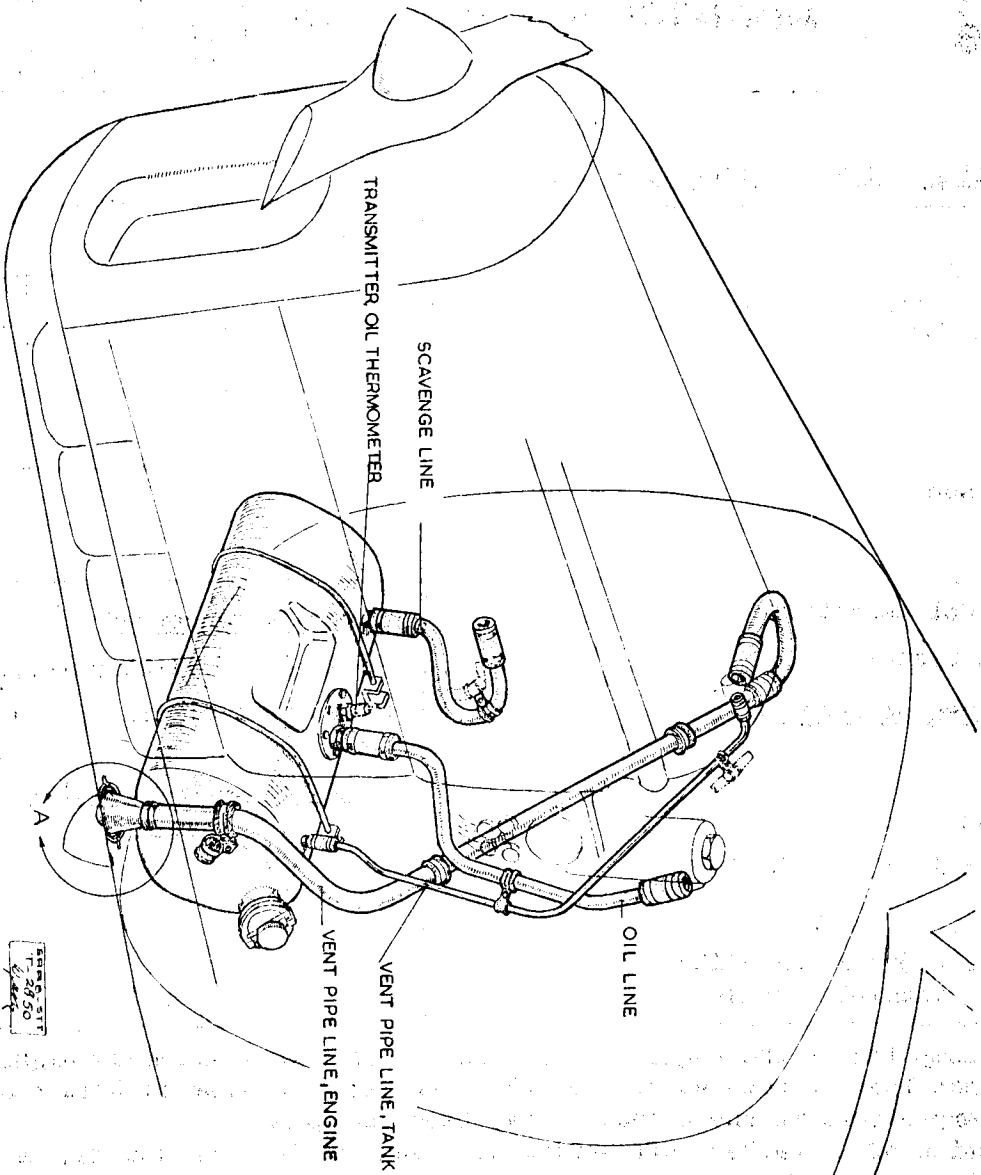
L. Larsson

SAAB DESIGN DEPT.

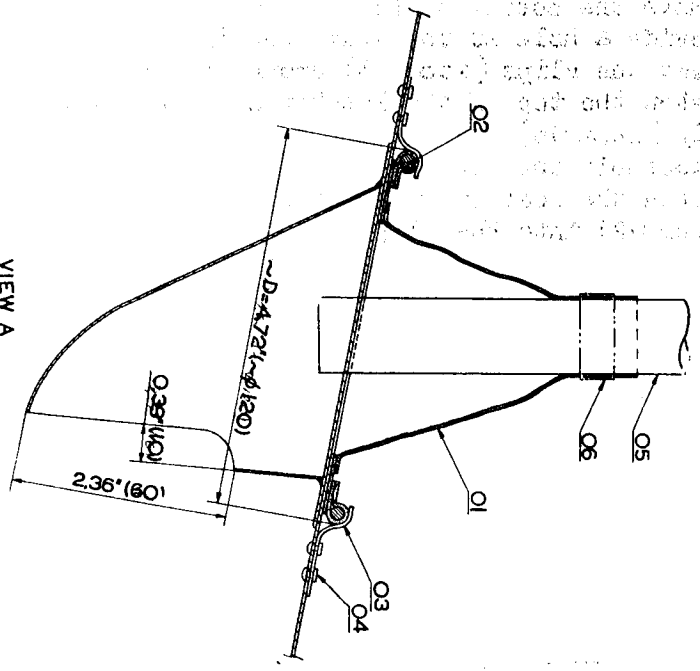
O. Engling

ROYAL SWEDISH AERONAUTICS BOARD:

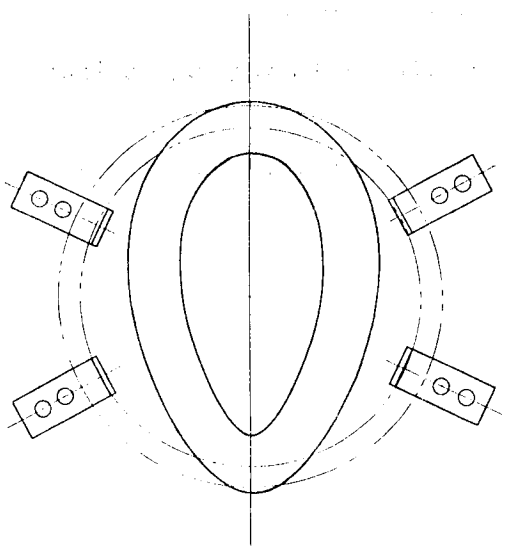
Hogelström



5748-31T
 P-2050
 1/24/50



VIEW A



5748-31T
 P-2050
 1/24/50