



service bulletin

Date April 1957

No. 91. 6. 005

AIRCRAFT SAAB SAFIR 91B AND 91C, MANUFACTURING NR 91. 201-91. 320

SUBJECT: Dividing of LH and RH baffle plates in engine cooling system.

REASON: Cracks may develop in the baffle plates.

TIME OF COMPLIANCE: Optional.

PARTS AFFECTED: Baffle plates SA 1082751 and SA 1082752.

WORK PROCEDURE:

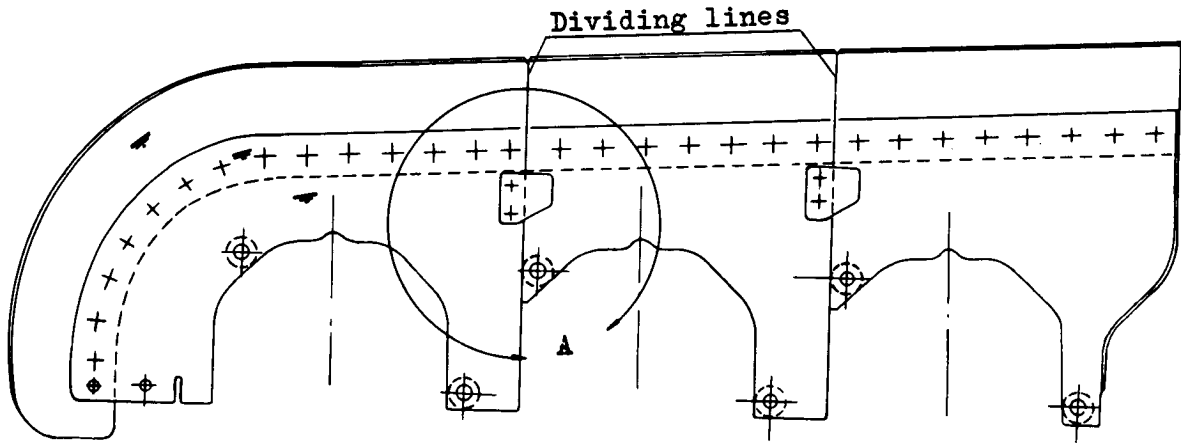
1. Baffle plates, mounted on the engines

Divide the baffles and rivet supporting lugs to them according to fig. 1. The dividing lines may be slightly altered to provide sufficient edge distance at old rivets and screw holes. If the space for shim 1077856ur is insufficient, reject the shim and rework spacer 1077127 according to fig. 2.

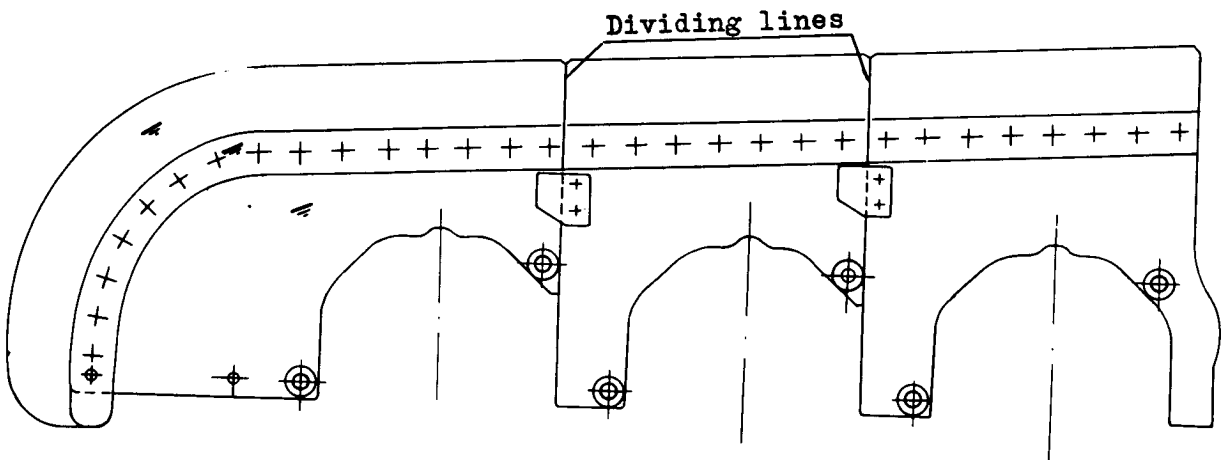
2. New baffle plates

When mounting new baffles on the engine, washer 1129851 according to fig. 3 is to be preferred instead of spacer 1077127 and shim 1077856ur.

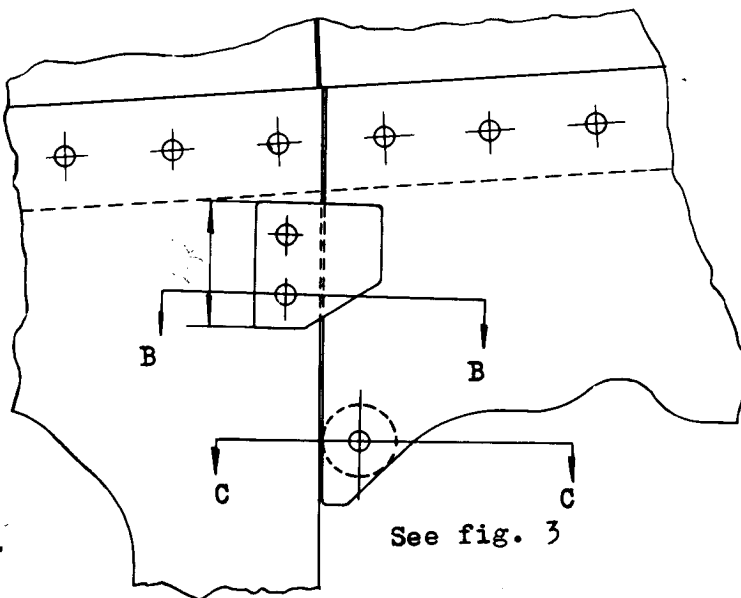
Drill out the predrilled holes in the baffles to \varnothing 6,5 mm to fit the attaching holes on the engine. Divide the baffles and rivet supporting lugs to them according to fig. 1. The dividing lines may be slightly altered to provide sufficient edge distance at old rivets and screw holes. Spacer 1077127 and shim 1077856ur can be used, but in that case the predrilled holes shall be drilled out to \varnothing 8,5 mm.



RH baffle plate



LH baffle plate



View A

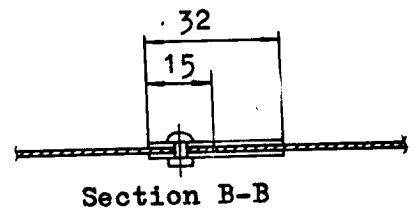


Figure 1

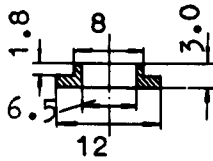
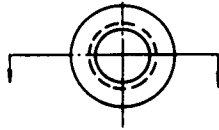


Figure 2

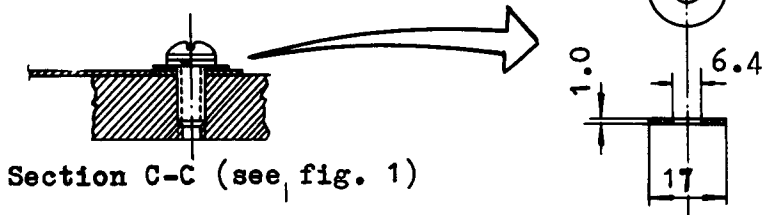


Figure 3