



*Svenska Aeroplan Aktiefolaget*

LINKÖPING  
SWEDEN

# service bulletin

Date November 1957

No. 91.6.007

AIRCRAFT SAAB SAFIR 91B, 91B-2 AND 91C

**SUBJECT:** Carbureter Marvel-Schebler MA 4-5.

**REASON:** To prevent contact of floats with the walls of fuel bowl in the carbureter, which may cause engine malfunction.

**PARTS AFFECTED:** Float and lever assembly p/n 30-629 according to parts list Marvel-Schebler MA 4-5 carbureter.

**TIME OF COMPLIANCE:** For information purposes.

Notice recommendation on page 3 in the manufacturers instructions:

"With carbureter completely assembled invert the carbureter slowly while listening for the floats to move. The floats should move freely if there is no contact of floats with the walls of fuel bowl".

In doubtful cases a closer investigation can be accomplished as follows: Separate throttle body and bowl cover assembly from carbureter body and bowl assembly and remove float and lever assembly according to MA 4-5 Service Repair Instruction.

Assemble float and lever assembly to fixture according to fig. 1, using float lever shaft. Screw the fixture to fuel bowl using 4 screws according to fig. 2. By moving the floats up and down when holding the bowl in different positions any contact of floats with the walls of fuel bowl can be detected. If contact is detected, the float lever must be adjusted to obtain at least 1 mm clearance between floats and fuel bowl.

Check position of the float bracket in relation to throttle body with fixture according to fig. 3.

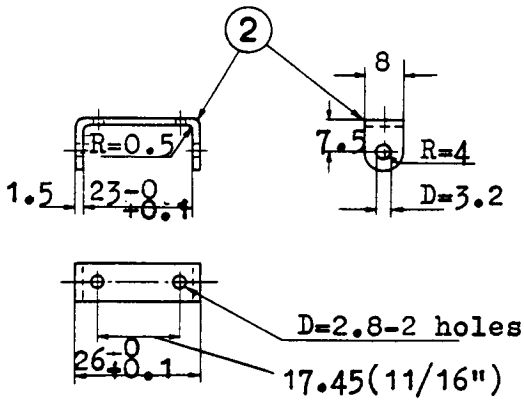
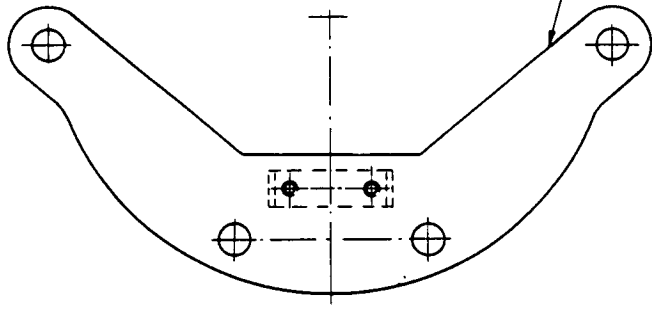
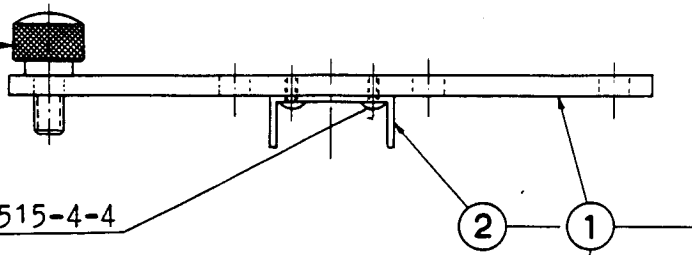
If adjustment is necessary remove solder on float bracket screws, loosen the screws and locate the bracket according to fixture.

Tighten the screws and secure them with solder.

Assemble the carbureter according to MA 4-5 Service Repair Instruction.

See page 3

3



FUEL BOWL

FIXTURE

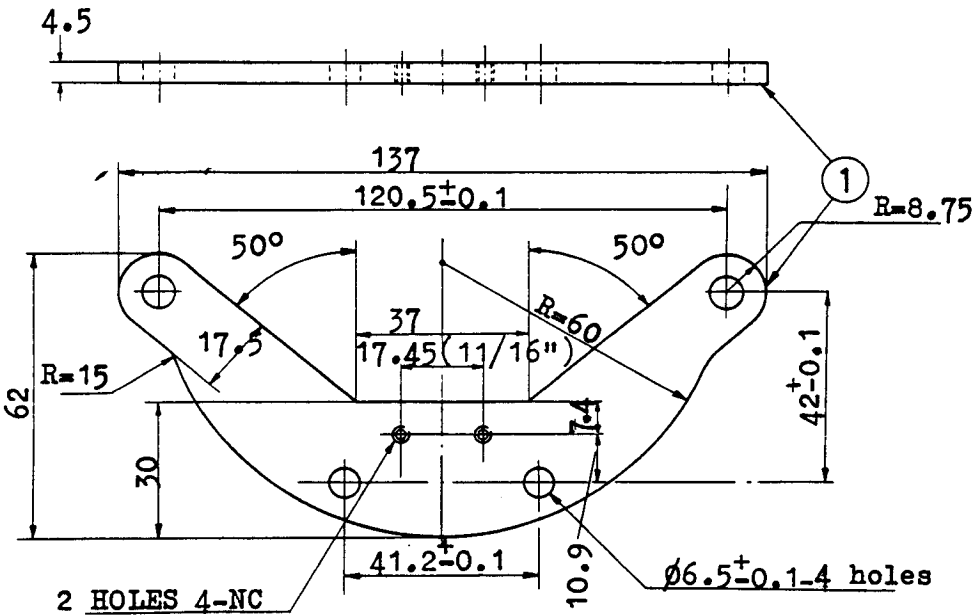
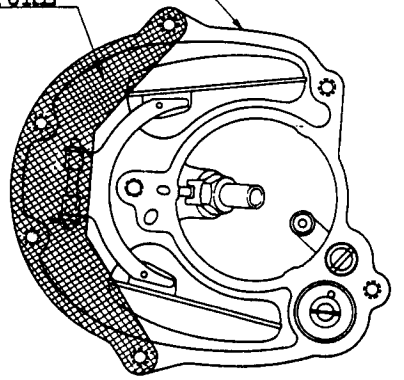


Figure 1

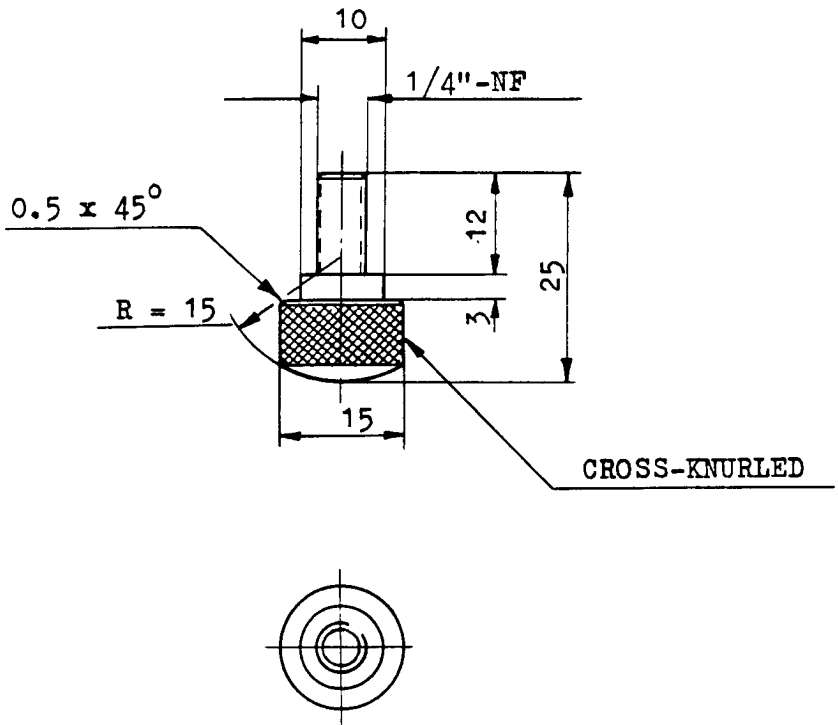


Figure 2

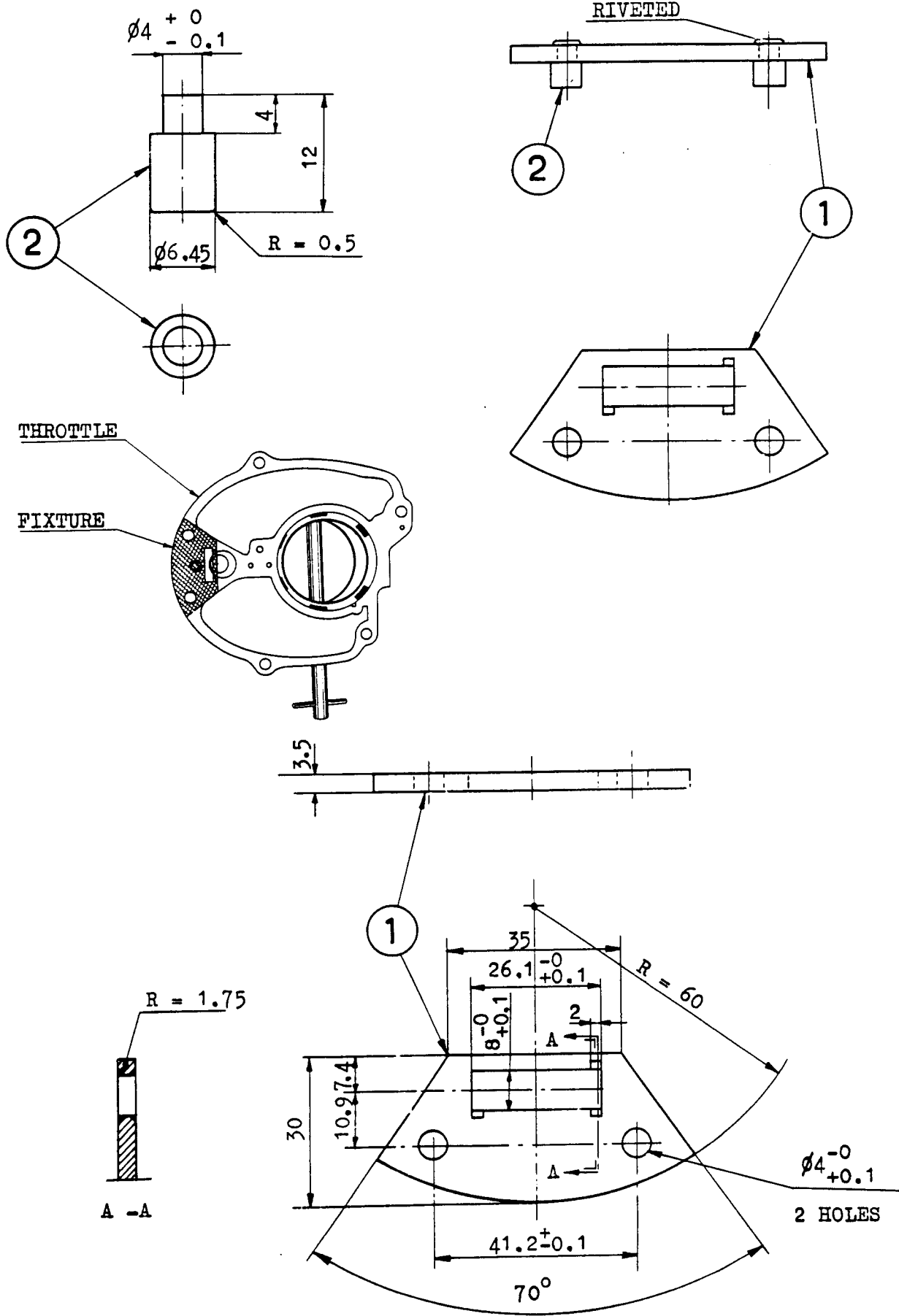


FIGURE 3