



Svenska Aeroplan Aktiefolaget

LINKÖPING
SWEDEN

Date Febr. 1958

No. 91.6.010

AIRCRAFT SAAB SAFIR 91B AND 91C.

SUBJECT: Exchange of metal propeller blades for plastic blades with rubber lining on leading edge.

REASON: Cracks have been discovered in metal propeller blades.

TIME OF COMPLIANCE: At airplane owners' discretion.

PARTS AFFECTED: Propeller blade SA 576228 (Hartzell No. 8433-6) of propeller 6100282 (Hartzell No. HC-12 x 20-8C/8433-6) or propeller SA 575198 (Hartzell No. HC-12 x 20-8D/8433-6). Blade clamps for metal blades SA 576178 (Hartzell No. 838-14).

New parts:

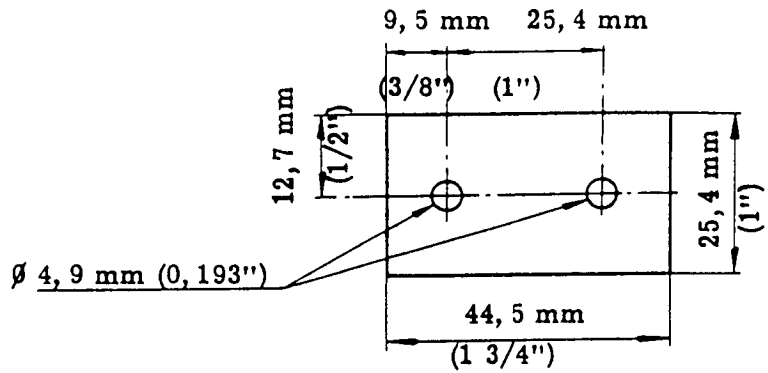
Plastic blade, HC 8428-6, with rubber lining on leading edge, SAAB No. 6101716.
Complete propeller, blades with rubber linings, (Hartzell No. HC-12 x 20-8D/SAAB 6101716), SAAB No. 6101715.
Blade clamps for plastic blades 6100325 (Hartzell No. 838-14).

WORK PROCEDURE: Exchange of blades should be made at a propeller maintenance work shop according to Hartzell Hydro-Selective Propeller Manual, Modell HC - 12 x 20.

Note:

The difference between clamps for metal blades and clamps for plastic blades is that plastic blades require heavier counterweights. Metal blade clamps can be modified to suit plastic blades by adding weight slugs to the counterweights according to the figure..

When assembling, the blades should be reamed with mounted clamps according to Hartzell Hydro-Selective Propeller Manual section VIII, A 3d and F.



Weight slug (4 required
per propeller)
Thickness = 2 mm (5/64")
Cadm. plated carbon steel
or stainless steel

