



MODIFICATION BULLETIN

AIRPL
MODEL
91
Safir

91.8/4

SA 511904/1

PAGE 1 OF 1

Voltage Regulator. Installation of Condenser.

URGENCY: III

EFFECT ON WEIGHT DISTRIBUTION:

TIME OF DELIVERY
FOR NECESSARY PARTS: 9th Oct. 1948

WEIGHT CHANGE
LBS.

STATION
IN.

MOMENT CHANGE
LBSIN.

Saab/C

-

-

-

MARKING: Modification number 1 on the identification plate for SA 511904 shall be deleted.

Drawings: Not essential

562743 Modification, Voltage Regulator

Aircraft concerned:

91102, 91104-91128, 91130-91132,
91134, 91136-91147.

(Number of aircraft: 42)

Parts required on each plane:

Item

01	1 Insulating Tube	2x50 AS 268601
02	1 Insulating Tube	2x25 AS 268601
03	1 Condenser	XP 8101-10
04	1 Clamp	12 AS 216501
05	1 Screw	M5x12 AS 212106
06	1 Identification Plate	AS 294709
07	2 Rivets	2x5 AS 211501
		Aluminium 3514-3

Spare Parts not involved

Sparking may occur in the gap between the breaker points in the voltage regulator. In addition the coil attachment pad may shake loose. For this reason a condenser should be installed at the breaker and further a retaining screw for the pad also attaching the condenser.

Working procedure:

Lift up the right engine cowl and remove the battery box.
Disconnect the connector at the voltage regulator and remove the regulator.
Connect the condenser and install the retaining screw as shown in fig.
Install the voltage regulator and insert the connector.
Punch the regulator production number together with SA 511904 on the identification plate, item 06 and cross out modification number 1 on the plate.
The production number should also be engraved in the bakelite pad.
Rivet the plate to the regulator housing with rivets, item 07.
Install the housing and the battery box.

SAAB SERVICE DEPT:

SAAB DESIGN DEPT:

ROYAL SWEDISH AERONAUTICS BOARD:

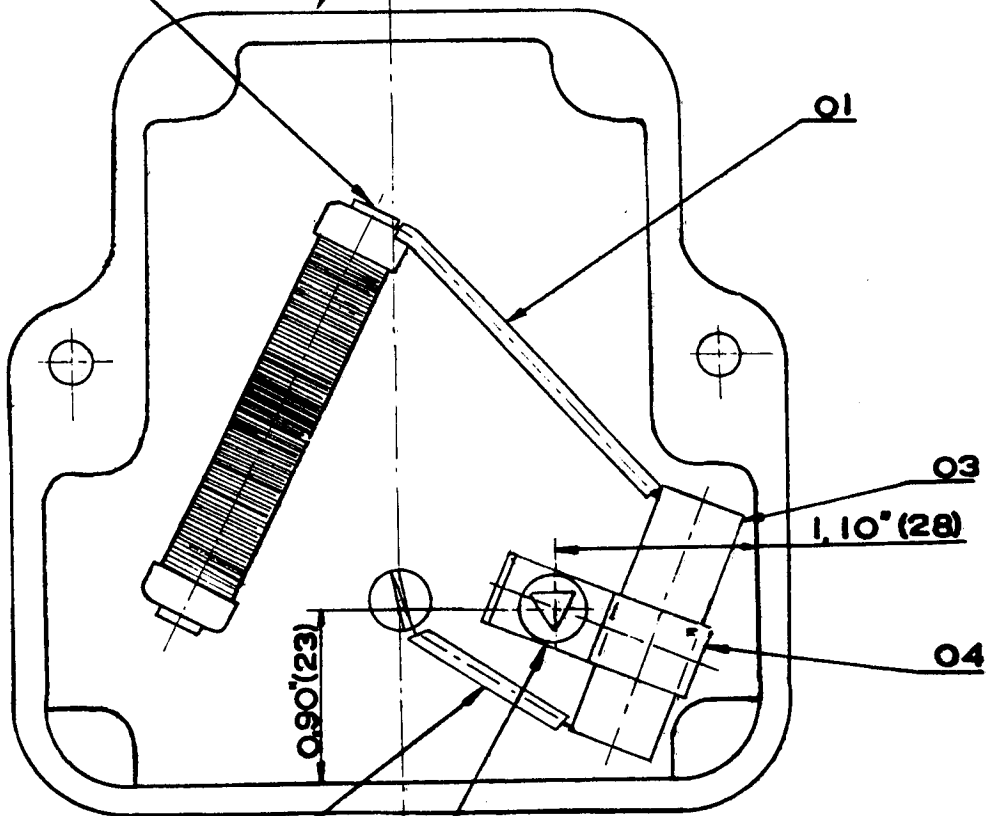
L. Larsson

O. Ösping

Hogelström

VOLTAGE REGULATOR

TO BE SOLDED



02

01

03

1.10" (28)

04

0.90" (23)

**05 TO BE SCREWED TO THE
RELAY SOLENOID BRACKET. AFTER-
WARDS TO BE SECURED BY LOCKING
LACQUER**

Job - 511
T-4075
K.E.E.